

IN THIS NEWSLETTER

MAYOR'S MESSAGE
PAGE 2

VEOLIA UPDATE
PAGE 3

GARBAGE & RECYCLING
PAGE 4

PUMPKIN COMPOSTING
PAGE 5

LEAF PICK-UP
PAGE 6

AMBULANCE CORPS
PAGE 7

ELECTION INFORMATION
PAGES 8, 9 & 10

TAX REMINDER
PAGE 11

COMMUNITY CENTER UPDATE
PAGE 11

LIBRARY NEWS
PAGE 12

SPEAKER MAGGIE DIPASQUALE
PAGE 13

HALLOWEEN COSTUME PARADE
PAGE 14

PANCAKE BREAKFAST
PAGE 15

BERGEN COUNTY JOB FAIR
PAGE 16

CIRCLE OF SUPPORT
PAGE 17

PROTECT YOUR MAIL
PAGE 18

HOLIDAY WREATH SALE
PAGE 19

BINGO & RAFFLE PRODEDURES
PAGE 20, 21

STAFF DIRECTORY
PAGES 22, 23



A MONTHLY
ELECTRONIC
NEWSLETTER
TO KEEP
RESIDENTS
INFORMED



[SIGN UP HERE](#)



Mayor Amy Wilczynski

**Matt O'Toole
Council President**

**Joseph Daloisio
Councilman**

**Liz Homan
Councilwoman**

**Susanne Lovisolo
Councilwoman**

**Ed O'Connell
Councilman**

**Tyler Yaccarino
Councilman**



Community leaders get a sneak peek of the Community Center on September 25.

*Get in touch...
Stay Connected*



www.allendalenj.gov

A MESSAGE FROM MAYOR AMY WILCZYNSKI

Here we are already in the last quarter of the year. Just when everyone is settling into a normal routine after the summer, the holidays begin!

Halloween is right around the corner with lots of festivities planned for our town. The Holiday Observers hosted their poster painting event at the red barn last week and soon we will see all of the creative artwork of Allendale's talented youth in our merchants' store windows. The Halloween parade, also sponsored by the Holiday Observers, is Saturday, October 26th at 5 pm. Allendale Rec Commission (ARC) is hosting something new to our town, a haunted Halloween event from Oct 25-27. Tickets are available at: www.ravenscroft-manor.com.

The third town hall was held last month. The topic was **Deer Management**. We brought in the NJDEP to provide facts on possible solutions to this increasing problem. This is the #1 complaint I receive from residents so it's important get facts from the authority on this. The mission statement of the DEP is: *to improve and protect public health and the environment that we share using the best science available*. I understand this is an emotional topic for some and I empathize with that. It's important to focus on the data and the concerns of Allendale residents. I cannot ignore when residents tell me that their kids cannot play outside because of deer droppings or that they or their loved ones have been in car accidents.

The root cause of this ballooning deer population is another top issue in Allendale, which is overdevelopment caused by the affordable housing mandate. The new fourth round numbers are due to come out on October 20th. We have been diligently preparing for this new round. All municipalities must submit their plans by January 31st to receive immunity from a builder's remedy lawsuit. The Fair Housing Act requires municipal affordable housing obligations to be "realistic." We have concerns that the new law is deeply flawed in that it imposes patently unrealistic obligations. Concurrently, we are dealing with Saddle River's new Fair Share Housing developments on our border and their impact on our sewer infrastructure.

I hope everyone read the information we put out regarding the Veolia-Allendale contract (if you missed it, it's included on the next page). We are working hard for our residents and doing everything we can with the rate case issue. **I would like to stress** that Allendale is now at non-detect levels for PFOS. This is the top priority, and this goal has been reached. However, the rate stabilization structure is also an important part of the contract and we feel strongly that Veolia should honor this. We will keep everyone informed as we seek legal advice to pursue this.

Lastly, we are working hard internally to get the community center up and running. The heads of our local organizations had a sneak peak last month. While the punch list is being finalized, we are creating systems and processes to get ready for a soft opening in November/December!

Come on out to one of our council meetings. We've spruced up Borough Hall and would love to see you!

Please stay informed: click to [sign up for constant contact](#), [Swiftreach](#) (now called RAVE) and follow the [Mayor Amy Wilczynski Facebook](#) and [Instagram](#) pages as well as the [Borough Facebook](#) page.



Mayor Amy Wilczynski





THE BOROUGH OF ALLENDALE

A MESSAGE FROM THE MAYOR & COUNCIL



Dear Residents,

This communication is to inform and update residents about Allendale's water (provided by Veolia). Specifically:

- > **Water treatment**
- > **Veolia's rates & billing**

WATER TREATMENT:

Veolia executed a productive and aggressive timeline to install temporary PFAS treatment at both the New Street water treatment facility and West Crescent. This is a significant win for Allendale residents. Our PFAS numbers at these wells are now at **non-detect levels!** The permanent treatment facilities for all four (4) wells continues to move forward. Veolia's engineering team has been excellent at working with Allendale, the NJDEP and their contractors to move these projects ahead to meet the aggressive timelines.

The Meeker Street water treatment facility also has plans for permanent treatment to be installed in the near future. Veolia has been proactive in ensuring that Allendale water meets and exceeds state and federal regulations.

The motivating factors for selling the Allendale water system were to provide clean, safe water to residents at an affordable price. With the complexity and cost of undergoing these types of water treatment projects and increasing state and federal regulations, it was outside of the core competencies of the borough to handle this type of specialized engineering infrastructure. Additionally, Veolia and their contractor Fletcher Creamer have done an excellent job in working to identify and remove residents' lead or galvanized service lines. This is another NJDEP unfunded, required mandate that Allendale could not have managed with our resources and staffing.

RATES & BILLING:

After the public referendum approval to sell our water system in 2021, a contract was signed with Veolia which contained Veolia's bid price of 18 million and the 10-year rate stabilization structure. This "Rate Stabilization Covenant" has a 0% increase for Allendale in the 2024 billing year.

On May 22 of this year, the BPU approved a total revenue increase of \$40 million for Veolia. Due to the terms of our contract, the Borough did not expect Allendale to receive any rate increase even though it was noted that rates are approved by the BPU. However, the borough learned that Allendale residents received a 12.25% rate increase from previous water bills. While there are many successes and positive outcomes from the sale, including treatment and repair of our water system, we believe that Veolia must uphold the agreed upon water rate stabilization structure.

WHAT WE ARE DOING:

- We have retained specialized legal counsel to explore our options to potentially pursue a reversal from Veolia's rate increase in a breach of contract claim.
- We are determined to work with the BPU to discern:
 - How is this rate increase allowable under BPU oversight?
 - How can we ensure that for the remainder of the rate stabilization agreement, Veolia is kept to the contractually stipulated rate increases?
 - What protection can the BPU provide for other municipalities who want to sell with regards to:
 - a. Having a rate stabilization covenant as part of an open public bid and implications to local public bidding law?
 - b. Allowing the rate stabilization to be included in a referendum to influence votes?

This may be a slow and challenging process, but as always, **we are committed and will always pursue what is right for residents.** We will keep everyone informed during council meetings as to our ongoing progress, challenges and outcomes. As a council we are always working for the best results of our friends and neighbors. We appreciate your continued support. Please reach out with any questions.

The Allendale Mayor & Council


Garbage & Recycling Schedule

WG West Garbage WB West Bulk WR West Recycling
 EG East Garbage EB East Bulk ER East Recycling

October 2024

Sun	Mon	Tue	Wed	Thu	Fri	Sat
		1 EG	2 EB	3 WR	4	5
6	7 WG	8 EG	9 WB	10 ER	11	12
13	14 WG	15 EG	16	17 WR	18	19
20	21 WG	22 EG	23 M	24 ER	25	26
27	28 WG	29 EG	30	31 WR		

November 2024

Sun	Mon	Tue	Wed	Thu	Fri	Sat
					1	2
3	4 WG	5 EG	6 EB	7 ER	8	9
10	11 WG	12 EG	13 WB	14 WR	15	16
17	18 WG	19 EG	20	21 ER	22	23
24	25 WG	26 EG	27 M	28 	29 WR	30 EG

GARBAGE

- Household kitchen, office & bathroom trash
- Styrofoam



BULKY TRASH

- Furniture
- Carpeting
- Non-metal items
- Windows/mirrors/pane glass must be taped with an "X"

METAL

- Anything that is at least 75% metal
- Artificial holiday trees

RECYCLING

Container One:

- Newspapers & inserts
- Junk mail, envelopes, office, notebook, construction paper
- Smooth and corrugated cardboard
- Glossy magazines and catalogs
- Soft-covered books and telephone books
- Non-metallic wrapping paper & greeting cards
- Shredded paper
- Brown Grocery bags



Container Two:

- Food & beverage containers
- Plastic containers with a recycling code 1, 2, 5 & 7
- Aluminum cans, foil
- Aseptic packaging (ex. soup, milk containers)
- Metal cans & empty aerosol cans
- Green, clear & brown glass bottles and jars

**Please note that there are 2 separate trucks that pick up recyclables.

Don't Idle!



Idling for more than 3 minutes is illegal in NJ. Any police officer can write a ticket. First offense is a \$250 fine.

Idling for more than 10 seconds wastes more gas (and your money!) than re-starting. Idling for 2 minutes is equal to 1 mile of driving.

Today's fuel injected cars don't need to be "warmed up," even when it's cold outside. They do so most efficiently when on the move.

Idling is rough on your car. It can cause a buildup of fuel residues that can damage your engine and increase fuel consumption.

Idling can make you sick! It creates dangerous air pollutants that cause asthma, allergies, heart & lung disease and cancer.

Garbage & Recycling Reminders

- All items should be put out starting at 6pm the night before the scheduled collection.
- Building materials and wood pallets are not collected by our garbage contractor. You must make your own arrangements to dispose of them.
- You must schedule a one-time, courtesy move-out pickup with info@AllendaleNJ.gov at least 4 WEEKS in advance. No metal, electronics, or recyclable materials collected.
- Remember to make sure that the lids are securely on top of your cans, especially garbage. This will help keep wildlife at bay.
- Collection containers can be no larger than 30 gallons.
- Bulk Trash must be placed on the curb and not placed in the road.
- Food containers being recycled need to be rinsed and cleaned before you dispose.
- Soiled pizza boxes are garbage and NOT recyclable.

PLEASE DO NOT LEAVE ANY DEBRIS IN THE ROAD: branches, scrap metal recycling, cardboard recycling, bulk trash, leaves, etc.



THE BOROUGH OF
ALLENDALE

**Recycling Center
& Compost Site
Regular Hours**

**Saturdays - 9am to 3pm
Wednesdays - 4pm to 7pm**

* **WINTER HOURS, December 21 - April 6, 2025** *

**Recycling Center: Saturdays, 9am - 2pm
Compost Site: CLOSED**

From the Allendale Green Team

The Allendale Green Team will partner with Rohsler's Nursery on November 9 and with Borst Landscaping and Design on November 30 at their locations to collect Pumpkins, Gourds, Mums and Cornstalks for composting. Residents are encouraged to keep these food waste materials out of the trash stream and landfills by returning them to the soil through composting as nature intended. Participants will receive a coupon from Rohsler's or Borst when material is accepted, regardless of where they were purchased.

Please direct any questions to Mark Savastano via AllendaleGreenTeam@gmail.com



**RECYCLE YOUR
FALL DECOR**

**ROHSLER'S & THE
ALLENDALE GREEN
TEAM ARE
COLLECTING
PUMPKINS, GOURDS,
CORNSTALKS &
MUMS**

**DON'T THROW YOUR PUMPKINS, GOURDS,
CORNSTALKS & MUMS IN THE TRASH!**

Bring them to Rohsler's Nursery to be composted on:

**Saturday, November 9th
9 a.m. to 4 p.m.**

Rohsler's will be offering a coupon for up to \$20.00 to participants in this recycling effort.
Haybales and Straw will not be accepted

BROUGHT TO YOU BY: The Allendale Green Team, Allendale
Scout Troop & NHRHS Environmental Awareness Club

**Rohsler's Allendale Nursery
100 Franklin Turnpike, Allendale, New Jersey**



2024 CURBSIDE FALL LEAF PICK-UP

Lawn/Leaf Bags are now available for pick-up
(while supplies last)
at the following locations and times:

DPW: 101 New Street, Monday - Friday, 8am to 3:00pm

**Compost/Recycling Center: 300 W. Crescent
Wednesdays 4-7pm & Saturdays 9-3pm.**

Curbside collection of BAGGED leaves begins the week of
OCTOBER 7TH (see schedule below). Place curbside
after 6pm the night before the scheduled pick-up week.

LEAVES MUST BE IN BROWN BIODEGRABLE PAPER BAGS ONLY.

WESTSIDE:

Week of October 7th
Week of October 21st
Week of November 4th
Week of November 18th
Week of December 2nd

EASTSIDE:

*Week of October 14th
Week of October 28th
*Week of November 11th
*Week of November 25th
Week of December 9th

***Shorter weeks due to holidays.**

COMPOST SITE - PERMIT ONLY*

**Saturdays 9am to 2pm & Wednesdays 4pm to 7pm
LAST DAY for drop-off: December 14th**

COMPOST CENTER CLOSED December 15th - April 6th, 2025

Permits cost \$30.00 and can be purchased by clicking here: [2024 COMPOST PERMIT](#)
(can also be found by searching "Compost Permit" on [allendalenj.gov](#))

or visit the Clerk's Office, Borough Hall, 500 W Crescent Avenue.

Note: On Tuesday, October 15th, Borough Hall will be open until 9:00pm for permit purchase.
Should you have questions, please call the DPW at: 201 818-4400x213



ALLENDALE AMBULANCE CORPS

Serving since 1937

Meet AVAC's Tuesday Duty Crew



(L-R) Charles Christie, Debbie Higbie, Jose Diaz Hernandez

Each weeknight and all day Saturday and Sunday, AVAC assigns a dedicated crew to help you! These volunteers are on duty for the full shift and are ready help you in your time of need.

Charles Christie, Driver, is our newest member. Charles joined AVAC this Spring because, as an Eagle Scout, he was looking for a local volunteer organization where he could help people. A lifelong resident of Allendale, Charles is a graduate of NHRHS, and currently is an International Business major at Ramapo College of New Jersey.

Debbie Higbie grew up in Allendale; most know her as the daughter of former firefighter and Superintendent of Allendale's DPW, George Higbie. Active in AVAC since 2019, first as a driver, Debbie became an EMT in 2021. She joined AVAC because of the family tradition of volunteering within the community. Debbie works in Treasury/Finance at her day job and loves to spend time at the beach, listening to the sound of waves breaking, but especially a good thunder and lightning storm!

Jose Diaz Hernandez joined AVAC in 2017 as a driver and then became an EMT in 2019. He felt it was a great way to serve the Allendale community since it was consistent with his prior experience as a combat live-saver in the US Army. Jose is an IT professional. One of his favorite hobbies is stargazing—he invites anyone in town who also loves to stargaze to give him a call!

Both Debbie and Jose say the most satisfying call they ever had was when they had to immobilize and transport a seriously injured patient who fell. To be able to help someone through a rough experience makes the training worth every second!

Community CPR CLASSES at Lee Memorial Library

Learn how to save someone's life!

Allendale Volunteer Ambulance Corps is again conducting CPR classes for the community!
October 19, October 26, and November 9 at 11am and 1pm each day at Lee Memorial Library.
 Registration is open now through the Library's Event Calendar: [REGISTER HERE](#)

The Allendale Volunteer Ambulance Corps is a group of men and women who volunteer their time to help you in your time of need. We do NOT charge for our services! Your donations help with our general operating costs, medical supplies, and also will help us purchase a new Ambulance. Donations can be sent to:

Allendale Ambulance Corps
 26 Arcadia Road
 Allendale, NJ 07401

CONSIDER JOINING AVAC! Call Daryl at 201-587-4008 for more info

General Election 2024

Important Election Dates

September 21

Mailing of Vote-By-Mail Ballots Begins

October 15

VOTER REGISTRATION DEADLINE

October 26-November 3

EARLY VOTING PERIOD

October 29

Deadline to Apply for Mail-In Ballot by Mail

November 1

Deadline Mail-In Ballot for Overseas/Military

November 4- 3:00 PM

Deadline for In-Person Mail-in Ballot Applications

November 5

GENERAL ELECTION

CONTACT INFORMATION

**MAIL-IN
BALLOT
APPLICATIONS**
County Clerk
201-336-7020

**VOTER
REGISTRATION**
Superintendent
of Elections
201-336-6109

**MAIL-IN BALLOT
RETURN**
Board of Elections
201-336-6230

AN IMPORTANT MESSAGE FROM

3 Ways to VOTE

BERGEN COUNTY CLERK
JOHN S. HOGAN



SUPERINTENDENT OF ELECTIONS
DEBRA M. FRANCICA



BOARD OF ELECTIONS CHAIRMAN
RICHARD L. MILLER



Go to your regular polling location on Election Day,
Tuesday, November 5, 2024

Polls are open from 6am to 8pm

Check your sample ballot for your polling location
or visit www.vote.nj.gov



VOTE EARLY

From October 26 through November 3

Monday - Saturday: 10am to 8pm
Sunday: 10am to 6pm

EARLY VOTING LOCATIONS

FORT LEE

Jack Alter Community Center
1355 Inwood Terrace

GARFIELD

Nutrition & Senior Citizen Center
480 Midland Avenue

HACKENSACK

Admin Bldg - 5th Floor Public Meeting Room
One Bergen County Plaza

PARAMUS

Bergen Comm. College/Technology Bldg
400 Paramus Road

RIVER VALE

River Vale Community Center
628 River Vale Road

TEANECK

Richard Rodda Center
250 Colonial Court

WOODCLIFF LAKE

Tice Senior Center
411 Chestnut Ridge Road

WOOD-RIDGE

Senior Center
495 Highland Avenue

WYCKOFF

Library - Shotmeyer Room
200 Woodland Avenue



Deadline to apply for a Mail-In Ballot by Mail for General Election:

October 29

You may cast your vote by mail ballot by:

- ▶ **Mailing it in as soon as possible.** Your ballot must be postmarked on or before Election Day
- ▶ **Depositing it in a Secure Ballot Drop Box** no later than 8pm on Election Day. Drop box locations can be found below and online at www.bergencountyvotes.com
- ▶ **Delivering your Vote by Mail ballot in person to the Board of Elections** located at: 1 Bergen County Plaza - Room 310 by 8pm on Election Day

If you are not set up to receive one already, **applications must be received by October 29.** To check your status, contact the Bergen County Clerk's Office **201-336-7020** or electionsclerk@co.bergen.nj.us

You can print out the Vote by Mail Application off our website, www.bergencountyclerk.gov/elections or you can request a Vote by Mail Application from the County or Municipal Clerk's Office.

BALLOT DROP BOX LOCATIONS

BERGENFIELD

Borough Hall

198 N. Washington Ave.

CARLSTADT

Borough Hall

500 Madison St.

DEMAREST

Borough Hall

118 Serpentine Rd.

DUMONT

Library

180 Washington Ave.

ENGLEWOOD

City Hall

2-10 North Van Brunt St.

EMERSON

Borough Hall

1 Municipal Pl.

FAIR LAWN

Borough Hall

8-01 Fair Lawn Ave.

FAIRVIEW

Library

213 Anderson Ave.

FORT LEE

Jack Alter Community Center

1355 Inwood Terr.

FRANKLIN LAKES

Borough Hall

480 Dekorte Dr.

GARFIELD

City Hall

111 Outwater Ln.

HACKENSACK

County Administration Building

One Bergen County Plaza

HASBROUCK HEIGHTS

Borough Hall

320 Boulevard

HILLSDALE

Borough Hall

380 Hillside Ave.

LODI

Library

1 Memorial Dr.

MAHWAH

Library

100 Ridge Rd.

NORTH ARLINGTON

Borough Hall

214 Ridge Rd.

NORWOOD

Borough Hall

455 Broadway

OAKLAND

Borough Hall

One Municipal Plaza

OLD TAPPAN

Borough Hall

227 Old Tappan Rd.

PARAMUS

Borough Hall

1 Jockish Square

RAMSEY

Library

30 Wyckoff Ave.

RIDGEWOOD

Village Hall

131 N. Maple Ave.

RIDGEFIELD

Community Center

725 Slocum Ave.

RIVER VALE

Borough Hall

406 Rivervale Rd.

RUTHERFORD

Borough Hall

176 Park Ave.

SADDLE BROOK

Municipal Complex

55 Mayhill St.

TEANECK

Municipal Building

818 Teaneck Rd.

WALDWICK

Municipal Building

15 East Prospect St.

TWP. OF WASHINGTON

Town Hall

350 Hudson Ave.

WESTWOOD

Community Center

55 Jefferson Ave.

WYCKOFF

Municipal Building

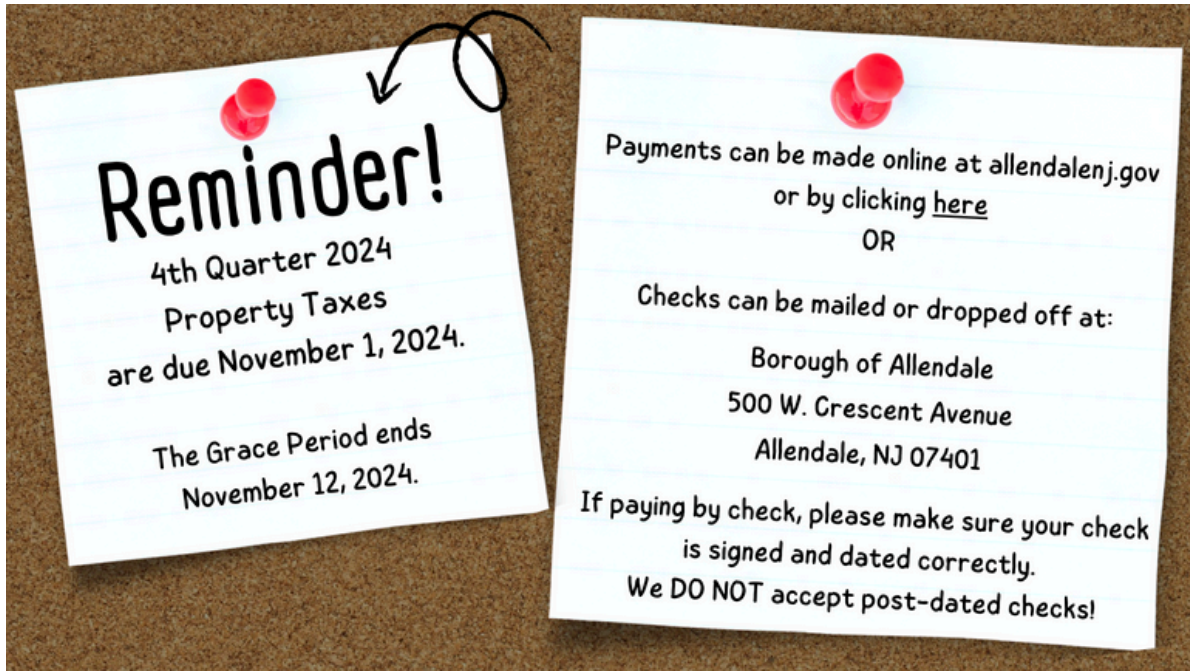
340 Franklin Ave.

FOR QUESTIONS ABOUT YOUR VOTE-BY-MAIL BALLOT, please contact the BERGEN COUNTY CLERK'S ELECTIONS DIVISION at electionsclerk@co.bergen.nj.us OR **(201) 336-7020**

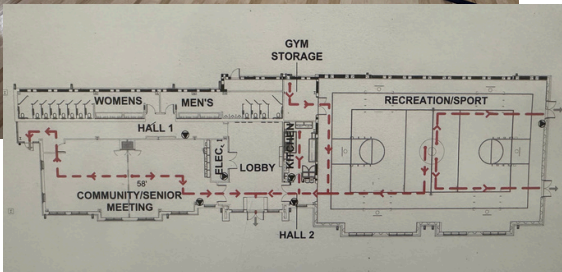
FOR QUESTIONS ABOUT YOUR POLLING PLACE, OR BECOMING A POLL WORKER, please contact the BERGEN COUNTY BOARD OF ELECTIONS at elections@co.bergen.nj.us OR **(201) 336-6225**

FOR QUESTIONS ABOUT VOTER REGISTRATION, OR TO REPORT A POTENTIAL ELECTION VIOLATION, please contact the OFFICE OF THE BERGEN COUNTY SUPERINTENDENT OF ELECTIONS at soe@co.bergen.nj.us OR **(201) 336-6109**

TO TRACK YOUR VOTE-BY-MAIL BALLOT, LOCATE YOUR POLLING LOCATION, or CHECK THE STATUS OF YOUR VOTER REGISTRATION, please visit: www.vote.nj.gov



Community Center Update



Mayor Amy Wilczinski gave a tour of our new Community Center to the leaders of some of our local organizations. Highlights included the gorgeous basketball court with maple floors, a full commercial kitchen, and a meeting room with divider to enable multiple gatherings at one time (complete with THREE large flatscreens for all your presentation needs! Looking forward to a soft opening at the end of the year!



Lee Memorial Library

NEWS



HALLOWEEN HAUNTS AND HORRORS!



A Literary
Celebration of
Everything Spooky
for **ADULTS!**

THURSDAY, OCTOBER 24
7:00 PM



Light refreshments will be served!
Registration required

**FEATURING
DRAMATIC
READINGS OF
EERIE & HAUNTING
TALES & POEMS.**

Readers include:
Patricia Durso,
Jackie McSwiggan,
Jim Wright,
Anna Kang Weyant,
Bill Scher,
& Ethan Galvin

Halloween Party!



AGES 4 AND UP, 10/31 AT 3:30PM

**JOIN US FOR DROP-IN
CRAFTS AND MORE
SPOOKY SURPRISES!**



SAVE THE DATE



HOSTED AND SPONSORED BY THE ALLENDALE WOMAN'S CLUB

Join teen mentor and parent coach Maggie DiPasquale as she breaks down Jonathan Haidt's #1 New York Times bestseller, *The Anxious Generation: How the Great Rewiring of Childhood Is Causing an Epidemic of Mental Illness*.



<p>SPEAKER HIGHLIGHTS</p>	<p>DATE AND PLACE:</p>
<p>THE IMPACT OF THE "PHONE-BASED CHILDHOOD"</p>	<p>11.19.2024</p> <p>LOCATION: ALLENDALE BOROUGH HALL</p>
<p>HELPING MANAGE THE STAGES OF ADOLESCENCE</p>	
<p>RESTORING A HEALTHIER CHILDHOOD FOR THE NEXT GENERATION</p>	<p>STAY TUNED FOR DETAILS AT WWW.ALLENDALEWOMANS.CLUB</p>



Learn more about Maggie:

www.maggiedipasquale.com

@maggiedipasquale

ALLENDALE HOLIDAY OBSERVERS PRESENT

HALLOWEEN 2024

NEW
DATE & TIME!

NEW
DATE & TIME!



ANNUAL COSTUME PARADE

- FAMILY PIZZA DINNER -
- PRIZES & MAGICIAN -

SATURDAY, OCT. 26TH
BROOKSIDE | 5-7:30PM

ALL PARTICIPANTS ENTERED IN A
RAFFLE FOR A NINTENDO SWITCH!



ALLENDALE CUB SCOUTS
PACK 59/252

1st Annual PANCAKE *Breakfast*



• SAT, NOV. 16TH 2024 •

9AM / 10AM / 11AM SEATINGS

TRINITY CHURCH

55 George St, Allendale, NJ 07401

FUNDRAISER EVENT

COFFEE ●

PANCAKES ●

MUSIC

Tickets Available at
AllendaleCubScouts.Org



BERGEN COUNTY JOB FAIR 2024

*Linking the best talent to
the best employers.*

FIND YOUR OPPORTUNITY

- 100+ Employers and Resources Multi-
 - Industry In-Demand Jobs Attend proven
 - career workshops On-the-spot
 - interviews Learn how to apply for civil
 - service jobs FREE headshots for the
 - first 75 people!
-

*Be dressed to impress and bring
plenty of copies of your resume!*

FRIDAY, OCTOBER 18, 2024

9:00AM - 2:00PM

Doors open at 8:30am

**BERGEN COMMUNITY COLLEGE
GYMNASIUM - PARKING LOT B**

400 Paramus Road, Paramus, NJ 07652



For more information, frequent
updates and to REGISTER,
scan the QR code or visit:

[BERGENJOBFAIR.COM](https://www.bergenjobfair.com)

JOB SEEKERS

Email:
jobfair@bergenjobcenter.com

James J. Tedesco, III
Bergen County Executive

Bergen County Board of Commissioners

Germaine M. Ortiz, *Chairwoman* · Mary J. Amoroso, *Vice Chairwoman* · Dr. Joan M. Voss, *Chair Pro Tempore*
Rafael Marte · Thomas J. Sullivan · Steven A. Tanelli · Tracy Silna Zur



NEIGHBORS HELPING NEIGHBORS



Allendale Circle of Support provides temporary assistance to Allendale residents facing financial difficulties

Donations are used to purchase gift cards for life's essentials like food, health and hygiene, holiday meals, back to school supplies and much more!

Venmo



DONATE

We rely on donations from the community for funding. Consider donating today!

Visit www.allendalecos.org for more information

Follow us!
Instagram



www.uspis.gov

PROTECTING YOUR MAIL



Postal Inspectors across the country work hard to protect your mail. But with deliveries to more than 100 million addresses, the Postal Inspection Service can't do the job alone.

Here's what you can do to protect your mail from thieves:

- Use the letter slots inside your Post Office for your mail, or hand it to a letter carrier.
- Pick up your mail promptly after delivery. Don't leave it in your mailbox overnight. If you're expecting checks, credit cards, or other negotiable items, ask a trusted friend or neighbor to pick up your mail.
- If you don't receive a check or other valuable mail you're expecting, contact the issuing agency immediately.
- If you change your address, immediately notify your Post Office and anyone with whom you do business via the mail.
- Don't send cash in the mail.
- Tell your Post Office when you'll be out of town, so they can hold your mail until you return.
- Report all suspected mail theft to a Postal Inspector.
- Consider starting a neighborhood watch program. By exchanging work and vacation schedules with trusted friends and neighbors, you can watch each other's mailboxes (as well as homes).
- Consult with your local Postmaster for the most up-to-date regulations on mailboxes, including the availability of locked centralized or curbside mailboxes.
- Sign-up for Informed Delivery at USPS.com. This service provides daily email notifications of incoming mail and packages.



If you see a mail thief at work, or if you believe your mail was stolen, call police immediately, then call Postal Inspectors at **1-877-876-2455**.



Holiday WREATH SALE

SUPPORT ALLENDALE CUB SCOUTS - PACK 59/252



\$30

This fresh balsam wreath has a dark-green appearance with long-lasting needles that are $\frac{3}{4}$ to $1\frac{1}{2}$ inches in length and retains its pleasing fragrance throughout the holiday season. These are double-sided wreaths and you cannot see the ring the wreath is built around which reduces the chance of scratching doors. Also, the bow that adorns the top of the wreath is hand tied and full.

Wreaths will be hand delivered to your home by the Cub Scout (local delivery only).

Scouts will be at Goldberg's Bagels the morning of November 2nd and 3rd for in-person sales!

Order by November 16, 2024 (delivery in early December)

Order at www.allendalecubscouts.org

or

make checks payable to "Allendale Cub Scouts" and give to a scout or send to
344 Schuyler Road, Allendale, NJ 07401
(please include your local delivery address)



Questions? Contact PJ & Liz Gomez at pjlizgomez@gmail.com



RAFFLE & BINGO LICENSE APPLICATION PROCEDURES

PLEASE MAKE SURE ALL INFORMATION IS
SUBMITTED IN A TIMELY MANNER IN ORDER
TO FACILITATE YOUR LICENSE!
APPLICATIONS NOT RECEIVED IN THE TIME
REQUESTED WILL NOT BE PROCESSED!



SCHEDULE OF FEES

On Premise 50/50 Raffle: On premise is defined as: Tickets are only sold at the time and the place of the drawing and winner must be present. No fees should be submitted since the applicant cannot determine if the value of the prize(s) exceeds \$400.00. If the proceeds exceed \$400.00 please submit a check to the LGCCC in the amount of \$20.00 for each day on which a drawing(s) is to be conducted under the license.

On Premise Merchandise Raffle: If the value of the prize should exceed \$400 or more it requires a per day or per event \$20.00 check made payable to the Borough of Allendale and a \$20.00 check made payable to the Legalized Games of Chance Control Commission (LGCCC).

Off Premise 50/50 Raffle: Off premise is defined as: Tickets sold in advance of the drawing and winners need not be present to win. This requires a \$20.00 check made payable to the Borough of Allendale and a \$20.00 check made payable to the LGCCC. If the retail value of the prize(s) awarded exceeds \$1,000.00 an additional \$20.00 per thousand or part thereof, is to be paid upon filing the reports of operations. SAMPLE TICKET REQUIRED

Off Premise Merchandise Raffle: Requires a \$20.00 check made payable to the Borough of Allendale and a \$20.00 check made payable to the LGCCC. If the RETAIL value of the prize awarded exceeds \$1,000.00, an additional \$20.00 for each \$1,000.00 or part thereof is to be paid to the Borough of Allendale and the LGCCC upon submission of application. SAMPLE TICKET REQUIRED

Instant Raffles: Requires a check for \$20.00 payable to the Borough of Allendale and a check for \$20.00 payable to the LGCCC for each day on which the instant raffle tickets are sold or offered for sale. For a one (1) year license a check of \$750.00 is payable to the Borough of Allendale and another check of \$750.00 should be made payable to the LGCCC upon submission of application.

Bingo: Requires a check for \$20.00 payable to the Borough of Allendale and an additional check for \$20.00 payable to the LGCCC PER BINGO DATE.

Carnival Games or Wheel & Non Draw Wheel : Requires a \$20.00 check payable to the Borough of Allendale and a \$20.00 check payable to the LGCCC for each game or wheel held on any one day, or any series of consecutive days not exceeding 6 at one location.

Special Door Prize Raffle: Requires NO FEE and NO LICENSE, the merchandise can be donated or purchased and has a retail value of \$200.00 or less. NOTE: Can be conducted with other raffles.

Calendar Raffle: RAFFLE 1 MONTH MINIMUM. Requires a \$20.00 check payable to the Borough of Allendale and a \$20.00 check payable to the LGCCC. If the retail value of prizes awarded exceeds \$1,000.00, checks must include additional fees in the amount of \$20.00 for each \$1,000.00 or part thereof over the initial \$1,000.00.

Golf Hole-In-One: Fees determined by Prizes.

Armchair Race: Requires a \$50.00 check payable to the Borough of Allendale and an additional 50.00 check payable to the LGCCC (per licensed day of operation) No Money Prizes– Merchandise /Gift Cards and Form 13 submitted with application.

Casino Nights or Texas Hold 'Em: Requires a check for \$100.00 payable to the Borough of Allendale and a \$100.00 check payable to the LGCCC (per occasion)

No Money Prizes: Merchandise/Gift Cards and Form 13 submitted with application.

RAFFLE & BINGO

LICENSE APPLICATION PROCEDURES

CONTINUED



INITIAL APPLICATION TO REGISTER AN ORGANIZATION

Every organization interested in conducting bingo or raffles or allowing its members to assist a licensed affiliated organization, must first apply to the Commission for eligibility. If the Commission determines that the applicant qualifies as a bona fide charitable, educational, religious, patriotic, public-spirited organization or senior citizen association or club, it issues to it a registration certificate reflecting its registration identification number.

Once registered with the Legalized Games of Chance Control Commission, the organization must file a license application(s) for each separate type of game of chance it intends to conduct from the appropriate municipality where the games are to be held. Upon doing so the organization must exhibit their registration certificate to the municipal clerk when submitting their license application.

Raffle and Bingo licenses are to be conspicuously displayed in the area/room where the games are held.

"Qualified organization" means a bona fide organization or association of veterans, religious congregation, religious organization, charitable organization, educational organization, fraternal organization, civic and service club, officially recognized volunteer fire company, officially recognized first aid squad, and officially recognized rescue squads, and senior citizens association or club organized as a non-profit or religious organization which supports one of the 'authorized purposes,' defined at N.J.A.C. 13:47-1.1.

"Registered organization" means an organization which has applied for, received and possesses a valid registration certificate bearing an identification number issued to it by the Legalized Games of Chance Control Commission. Only a registered organization is qualified, within the meaning of N.J.S.A. 5:8-60.3, to conduct raffles.

The Charitable Registration and Investigation Act of 1994 requires certain groups organized as a 501(c)(3) entity or which raise money for charitable purposes to register with the Division of Consumer Affairs - Office of Consumer Protection's Charities Registration Section. To check whether your organization is required to register with the Section, you can call (973) 504-6215 or click the above link.

- Initial Affidavit and Application for Biennial Registration
This form is used by organizations other than senior citizens clubs or associations, that wish to conduct bingo games or raffles.

- Initial Affidavit and Application for Senior Citizen Club Biennial Registration
This form is used by senior citizen clubs or associations that wish to conduct bingo games or raffles.

APPLICATION PROCESS

Please complete four (4) Raffle/Bingo applications per event, providing original signatures of officers & members in charge and **notarized (all 4 copies)**.

Show original valid registration certificate issued by the Legalized Games of Chance Control Commission.

Submit four (4) copies of sample ticket (OFF PREMISE MERCHANDISE & 50/50 RAFFLES ONLY)

Applications must be completed and submitted to the Borough Clerk's office.

Upon Approval by the Borough of Allendale, the application and applicable fees are forwarded to the Legalized Games of Chance Control Commission (LGCCC) for approval.

Licenses will be issued approximately 14 calendar days after the Borough Clerk's approval, unless it has been rejected by the LGCCC, pursuant to N.J.A.C. 13:47-4.3

Upon completion of a Raffle or Bingo, the reports of operations shall be sent to the LGCCC no later than the 15th day of the calendar month immediately following the calendar month in which the Bingo/Raffle was held. A copy of this report should be sent to the Borough as well.

AFTER THE EVENT

Games of Chance Operations Report The Report of Operations shall be filed by the licensee with the LGCCC no later than the 15th day of the calendar month immediately following the calendar month in which the licensed activity was held. If the Report of Operations is not filed any future applications will be denied by the LGCCC. Please provide a copy to the municipal clerk as well.

For more information on raffles and the necessary fillable forms, please visit the website below:
<https://www.njconsumeraffairs.gov/lgccc/Pages/applications.aspx>

ANY QUESTIONS REGARDING
RAFFLES AND BINGOS, CONTACT
THE OFFICE OF THE BOROUGH CLERK
AT 201-818-4400 EXT. 216



Administration, Clerks Office, Board of Health

201-818-4400

Alison Altano, CFO & Borough Administrator

AlisonAltano@Allendalenj.gov OR Ext. 205

Linda L. Cervino, Clerk

LindaCervino@Allendalenj.gov OR Ext. 216

Amanda Richards, Administrative Assistant

AmandaRichards@Allendalenj.gov OR Ext. 218

Dottie Blitzer, Administrative Assistant

DottieBlitzer@allendaleNJ.gov OR Ext. 200

Julia Margagliotta, Director of Communication

JuliaMargagliotta@Allendalenj.gov

Health Department

HealthDept@Allendalenj.gov OR Ext. 211

Vital Statistics Records

Marriage Licenses, Death & Birth Certificates

Northwest Bergen Regional Health Commission

201-445-7217

Building Department, Land Use, Property Maintenance

Anthony Hackett, Construction Official

CodeOfficial@Allendalenj.gov OR Ext. 208

Linda Garofalo, Land Use Administrator

LindaGarofalo@Allendalenj.gov OR Ext. 201

Mike Limatola, Property Maintenance Officer

MikeLimatola@allendalenj.gov OR Ext. 202

Department of Public Works

Andrew J. Agugliaro, Superintendent

AndrewAgugliaro@Allendalenj.gov OR Ext. 501

Kim Olivieri, Administrative Assistant

KimOlivieri@Allendalenj.gov OR Ext. 213

Tax & Finance Office

Gina Wittmaack, Tax Collector

GinaWittmaack@Allendalenj.gov OR Ext. 206

Angela Mattiace, Tax Assessor

AngelaMattiace@Allendalenj.gov OR Ext. 210

Allendale Municipal Court

Rose Novelli-Salyer, Court Administrator

novellir@ho-ho-kusboro.com OR 201-652-0699



Mayor & Council

Amy Wilczynski, Mayor

AmyWilczynski@AllendaleNJ.gov

Matt O'Toole, Council President

MatthewOTOole@AllendaleNJ.gov

Chair – Public Safety Committee

Joseph Daloisio, Councilman

JosephDaloisio@AllendaleNJ.gov

*Chair – Public Works & Public Utilities Committee
Member of Land Use & Construction Code Committee*

Liz Homan, Councilwoman

LizHoman@AllendaleNJ.gov

*Member of Public Works & Public Utilities Committee
Member of Finance, Human Resources, Administration &
Information Tech. Committee*

Susanne Lovisolo, Councilwoman

SusanneLovisolo@AllendaleNJ.gov

*Chair – Land Use & Construction Code Committee
Chair – Finance, Human Resources, Administration &
Information Tech. Committee*

Ed O'Connell, Councilman

EdwardOConnell@AllendaleNJ.gov

Member of Facilities, Parks and Recreation Committee

Tyler Yaccarino, Councilman

TylerYaccarino@AllendaleNJ.gov

*Chair – Facilities, Parks and Recreation Committee
Member of Public Safety Committee*

 [CLICK HERE](#)
TO SIGN UP FOR
FUTURE
NEWSLETTERS,
BOROUGH EMAILS
& POLICE ALERTS

Thank you for reading!



[@AllendaleNJBorough](#)