

A MESSAGE FROM MAYOR AMY WILCZYNSKI

Summer is in full swing. Crestwood is booming! Don't forget to check out the **summer concert series** at the lake: it's open to all residents. We have a great lineup planned, including a movie night sponsored by Allendale Ambulance Corps on August 3rd!

The Fourth of July is such a quintessential Allendale Day. I love seeing the entire community come together for old fashioned fun during the day and then ending the night with an amazing fireworks show. Thank you to the Holiday Observers for always running a perfect holiday event.

Phase 5 & 6 of **the downtown streetscape project** will begin sometime in August. The pavers will continue along Central Ave (along the tracks) and along DeMercurio Dr. This project is primarily paid for through DOT grants. The Borough always takes advantage and has had great success with all sorts of grants when they come available. In addition to the streetscape, in the past year we've applied for grants for the community center, concession stand, tennis courts, new ADA bathroom for the firehouse and various improvements to Borough Hall and Crestwood. We have received notification already that most will be approved. Over the years we have received millions of dollars in state, county and federal funding that would have otherwise been paid by taxpayers. Our motto is, If you don't ask, you don't receive!

We celebrated and honored our Allendale residents who are serving in the military at **Armed Forces Day**. This is the second year we've done this and plan on making it another wonderful Allendale tradition. Thanks to military families, the Harts and Winters, for your help in bringing this community together. This event has created a wonderful group of support for the families as well as the 'kids' serving.

(Continued on next page...)

A MONTHLY
ELECTRONIC
NEWSLETTER
TO KEEP
RESIDENTS
INFORMED



[SIGN UP HERE](#)

IN THIS NEWSLETTER

MAYOR'S MESSAGE
PAGES 1 - 2

COMMUNITY CENTER UPDATE
PAGE 3

GARBAGE & RECYCLING GUIDE
PAGE 3

AMBULANCE CORPS GRADS
PAGE 4

NJMVC MOBILE INSPECTIONS
PAGE 4

AROUND TOWN
PAGE 5

TAX REMINDERS
PAGE 7

CERT NEWS
PAGE 8

BCUA SCHEDULE
PAGE 8

FAMILY DAY FUNDRAISER
PAGE 9

LIBRARY'S FAMILY FUN SERIES
PAGE 11

STAFF DIRECTORY
PAGES 12-13

MAYOR'S MESSAGE CONTINUED...

The building of **the community center** at 210 West Crescent is moving along quickly and we hope it will be completed and in use for the Allendale community by year-end. You can see the improvements daily as you drive by. Check out the video updates on the Mayor Amy Facebook and Instagram pages.

As a brief review of the project, the Borough Hall offices and library will remain at 500 West Crescent. Original plans for 210 West Crescent were to create a 2-story building which would include the borough clerk's office, finance offices and building department. This plan would have then provided space for the library to move into the current borough offices. Unfortunately, COVID changed everything. After the pandemic, building and related costs became exorbitant, and supply chain issues were causing severe delays in material deliveries that were jeopardizing the project. If we had lost our developer, the borough would have been required to go back out to bid and risked having the next bidders proposing hundreds of units.

After much analysis and discussion, the 210 West Crescent community center building was redesigned as one floor without the borough offices. Post COVID, we worked differently and more remotely, and ultimately decided that we could efficiently utilize the borough offices at the 500 West Crescent building. More importantly, we could not justify the increased price tag.

The building was built with optionality, meaning it can easily have a 2nd floor added on in the future if need be. While the library was excited about the prospect of expanding, the trustees understood cost management and the ballooning price tag of the project and were supportive of the decision to have the borough offices remain in place. The community center will be an exciting addition to Allendale, providing much needed activity and meeting space. Stay tuned for more updates.

Finally, the Fair Share Housing issue is on the forefront of my daily discussions. I plan on keeping everyone informed as we navigate through the new rules and obligations. Our team of experts met again this week, and we were told Allendale is in much better shape than most municipalities. We want what's best for Allendale and fair for the overarching goal of affordability. Stay tuned...

Please stay informed: click to [sign up for constant contact](#), [Swiftreach](#) (now called RAVE) and follow the [Mayor Amy Wilczynski Facebook](#) and [Instagram](#) pages as well as the [Borough Facebook](#) page.



Mayor Amy Wilczynski



**Mayor Amy
Wilczynski**

**Matt O'Toole
Council President**

**Joseph Daloisio
Councilman**

**Liz Holman
Councilwoman**

**Susanne Lovisolo
Councilwoman**

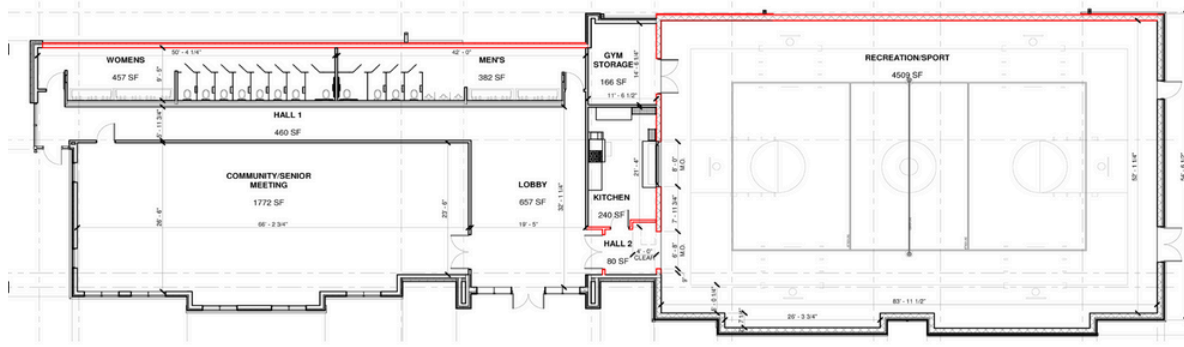
**Ed O'Connell
Councilman**

**Tyler Yaccarino
Councilman**

*Get in touch...
Stay Connected*



www.allendalenj.gov



The Allendale Community Center is located at 210 West Crescent Ave. It will be available for all Allendale residents to use for meeting and recreation space.

To the right of the building is a gym area, which will be lined for basketball and pickleball. A commercial kitchen will also overlook the gym.

As you look at the building from the front, the left side is a large room with a divider to make it into two meeting rooms. There will be TVs set up for presentations and a kitchenette area.

Borough Hall offices will remain at the current 500 West Crescent building. Lee Memorial Library will remain in the same space as well.

We anticipate to be in the building by the end of the year.

Garbage & Recycling Schedule

WG West Garbage **WB West Bulk** **WR West Recycling**
EG East Garbage **EB East Bulk** **ER East Recycling**

July 2024

Sun	Mon	Tue	Wed	Thu	Fri	Sat
	1 WG	2 EG	3 EB	4 WG	5 ER	6 EG
7 WG	8 EG	9 WB	10 WR	11 EG	12	13
14 WG	15 EG	16	17 WG	18 ER	19 EG	20
21 WG	22 EG	23 M	24 WG	25 WR	26 EG	27
28 WG	29 EG	30	31			

August 2024

Sun	Mon	Tue	Wed	Thu	Fri	Sat
				1 WG	2 EG	3
4 WG	5 EG	6 EB	7 WG	8 WR	9 EG	10
11 WG	12 EG	13 WB	14 WG	15 ER	16 EG	17
18 WG	19 EG	20	21 WG	22 WR	23 EG	24
25 WG	26 EG	27 M	28 WG	29 ER	30 EG	31

GARBAGE

- Household kitchen, office & bathroom trash
- Styrofoam

BULKY TRASH

- Furniture
- Carpeting
- Non-metal items
- Windows/mirrors/pane glass must be taped with an "X"

METAL

- Anything that is at least 75% metal
- Artificial holiday trees

RECYCLING

- Container One:*
- Newspapers & inserts
 - Junk mail, envelopes, office, notebook, construction paper
 - Smooth and corrugated cardboard
 - Glossy magazines and catalogs
 - Soft-covered books and telephone books
 - Non-metallic wrapping paper & greeting cards
 - Shredded paper
 - Brown Grocery bags
- Container Two:*
- Food & beverage containers
 - Plastic containers with a recycling code 1, 2, 5 & 7
 - Aluminum cans, foil
 - Aseptic packaging (ex. soup, milk containers)
 - Metal cans & empty aerosol cans
 - Green, clear & brown glass bottles and jars

**Please note that there are 2 separate trucks that pick up recyclables.

Garbage & Recycling Reminders

- All items should be put out starting at 6pm the night before the scheduled collection.
- Building materials and wood pallets are not collected by our garbage contractor. You must make your own arrangements to dispose of them.
- You must schedule a one-time, courtesy move-out pickup with info@AllendaleNJ.gov at least 4 WEEKS in advance. No metal, electronics, or recyclable materials collected.
- Remember to make sure that the lids are securely on top of your cans, especially garbage. This will help keep wildlife at bay.
- Collection containers can be no larger than 30 gallons.
- Bulk Trash must be placed on the curb and not placed in the road.
- Food containers being recycled need to be rinsed and cleaned before you dispose.
- Soiled pizza boxes are garbage and NOT recyclable.

RECYCLING CENTER
2024 REGULAR SEASON
APRIL 6TH TO DECEMBER 7TH
SATURDAYS - 9AM TO 2PM
WEDNESDAYS - 4PM TO 7PM



ALLENDALE AMBULANCE CORPS SERVING SINCE 1987

CONGRATULATIONS TO OUR YOUTH SQUAD GRADUATES!

Allendale Volunteer Ambulance Corps runs an incredible Youth Squad program. This program begins by training High School aged students as National and NJ registered EMTs. Youth Squad members are then assimilated into the AVAC duty crews and become active participants on all AVAC's calls, mentored and encouraged by our adult volunteer members who have been riding for years. FYI, Our volunteer members hold "day jobs" which include: Engineers, lawyers, Accountants, plumbers, stay-at-home moms and dads, caregivers, college professors, nurses, & EMS professionals.

Are you 16 + years old? Experience the satisfaction of helping our fellow residents, someone in need, or just to learn how to assist your own family members in a time of need-- Join Allendale Volunteer Ambulances Corps! We will train you! For more info, Call AVAC's Chief at: 201-587-4008.

On Friday night, June 21, AVAC was excited to stand-by at Northern Highlands' Graduation and celebrate the accomplishments of 4 of our Youth Squad Members--Valedictorian **Isha Korgaonkar**, **Danielle Larsen**, **Sydney Wishik** and **Ryan Rahman**!! Great job! We are honored to be a small part of your huge success!!



NJ MOTOR VEHICLE'S
MOBILE INSPECTION UNIT
is coming to

ALLENDALE

**WHEN: JULY 17, JULY 22 & JULY 26
8AM - 1PM**

**WHERE: THE RED BARN
AT CRESTWOOD**

**VEHICLES DUE FOR INSPECTION IN
JULY, AUGUST & SEPTEMBER WILL
BE INSPECTED FREE OF CHARGE**

This info is subject to last minute changes or cancellations.

Around Town



DINE THE 'DALE

On the beautiful sunny evening of June 15th, West Allendale Ave was closed to traffic to allow our residents to dine, stroll and generously donate to the Allendale Mural Project! A big thank you to the VIP table designers: Robyn Rohsler's Floral Design, Theodora's, and Donn  Booyen & Dawn Stalin of Wostbrock Home, and to all the participating restaurants!



PARTICIPATING RESTAURANTS

MEZZA LUNA BISTRO ... AND MORE!

Donate

ALL DONATIONS GO TOWARD FUNDING THE ALLENDALE MURAL PROJECT

Allendale Mural
@allendalemuralproject

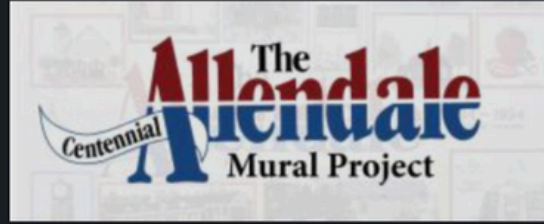
venmo

Thank you!

Since you've been asking...



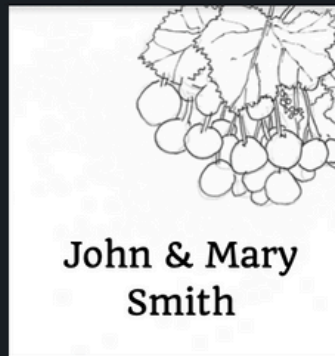
The insulated Allendale cups sold at Dine the 'Dale are still available! Stop by Borough Hall to purchase.



BE A PART OF ALLENDALE HISTORY

FEATURE YOUR FAMILY NAME OR BUSINESS
ON A TILE THAT WILL BE INTEGRATED INTO
THE NEW ALLENDALE MURAL

Sample Tiles

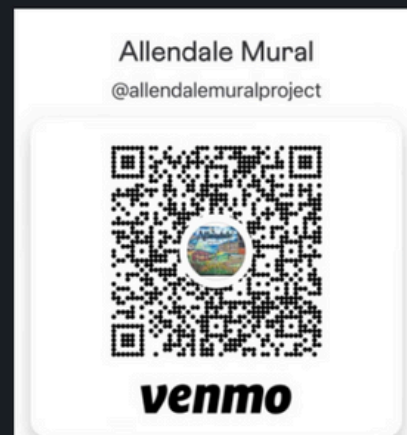


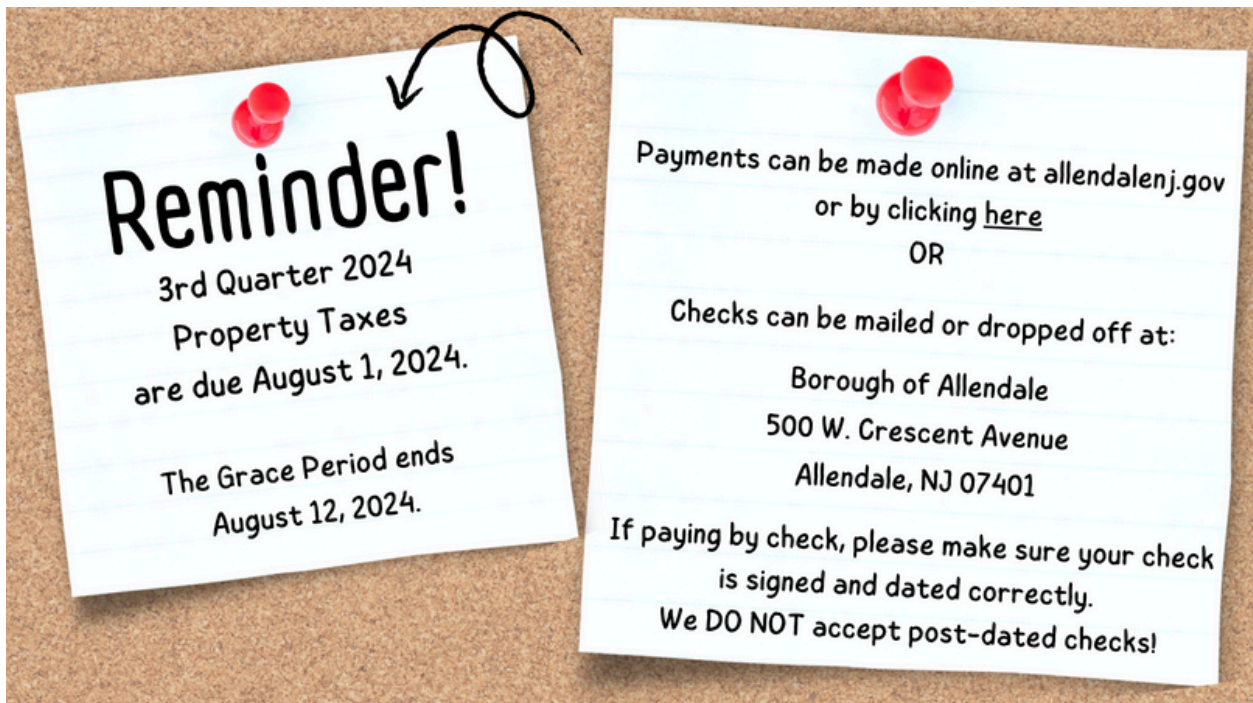
EACH TILE WILL FEATURE A UNIQUE
AND ORIGINAL SKETCH OF AN
INDIGENOUS PLANT OR FLOWER
DESIGNED AND DRAWN BY ARTIST
SIMON RIGG

5 X 5 - \$500
10 X 10 - \$1,000



CLICK HERE TO PERSONALIZE
[TINYURL.COM/MURALTILEFORM](https://tinyurl.com/muraltileform)





Tax Collector's Update

We've got some exciting news that's going to make your life a whole lot easier – introducing **AutoPay** for your tax bills!

Here's how AutoPay works:

1. Effortless Payments: Once you enroll in AutoPay, your tax bills will be deducted from your chosen method of payment on the due date each quarter.
2. Secure and Reliable: Your payment information will be securely stored, and our payment processing is highly reliable, ensuring that our payments are made on time.
3. Flexibility: You can choose the payment method that suits you best, whether it's a bank account or credit card. Plus, you can update your payment details or unenroll from AutoPay at any time.

How to Get Started:

Log in to your WIPP Payment Portal at <https://wipp.edmundsassoc.com/Wipp/?wippid=0201>

Log into your Registered User Account. Not a registered user? No problem, just click the NEW USERS link to create an account.

Click the **SETUP AUTOPAY** link.

Enroll in AutoPay and choose your preferred payment method.

That is all there is to it! Once you have signed up, you will receive email notifications before your payment is set to be processed.



FEMA’s Community Emergency Response Team (CERT) program educates citizens about disaster preparedness for hazards that may impact their area and provides training in basic disaster response skills, such as:

- Fire safety
- Light search and rescue
- Team organization
- Shelter fundamentals and management
- Disaster medical operations
- Disaster psychology

If you are interested in learning valuable skills to help family, friends, and neighbors during a disaster or emergency, consider joining Allendale’s Community Emergency Response Team. You can contribute and make a difference even if you don’t have a significant amount of time to volunteer. The next CERT Basic Training course is scheduled to run from September 26th through November 9th in Paramus. For questions about CERT, email allendalecertcoordinator@gmail.com.



2024 Household Hazardous Waste (HHW) Collections

Bergen County Campgaw Reservation
200 Campgaw Rd., Mahwah
Saturday, July 20, 2024
Saturday, September 7, 2024

Bergen Community College
400 Paramus Rd., Paramus
Sunday, October 20, 2024

HHW event collection hours are 9:00 a.m. - 3:00 p.m. (rain or shine)

2024 Document Shredding, Electronics Recycling and Tire Recycling

Bergen Community College
400 Paramus Rd., Paramus
Saturday, August 10, 2024

Bergen County Campgaw Reservation
200 Campgaw Rd., Mahwah
Sunday, October 6, 2024

Document shredding, electronics and tire recycling event collection hours are 9:00 a.m. - 2:00 p.m. (rain or shine)

Visit www.bcua.org for full details

**SAVE
THE DATE!**

LEE
MEMORIAL
LIBRARY

...for Lee Memorial Library's First

**FAMILY DAY
FUNDRAISER**

**\$5 per person/
\$25 per family**

SEPTEMBER 7, 2024

11AM - 2PM

RED BARN, CRESTWOOD PARK

Special Performances By:

- Bubble Show Plus
- Steve Woyce, Magician

Games, Food Trucks,
and more!

Fun for the whole
family!

**SPONSORED BY THE FRIENDS OF
THE LEE MEMORIAL LIBRARY**

Stay tuned for more information!
<https://www.leememoriallibrary.org/>

Hey Allendale residents,
you may be eligible for a

FREE Home Energy Assessment

Identify areas in your home where you can save energy & money and make informed decisions about energy efficiency upgrades.



See which assessment is right for you!

Get started today at oru.com/comfort



Quick Home Energy Check-up

- Assessment with certified energy advisor
- Complimentary energy-saving installations
- Energy-efficient recommendations

Free for all Rockland Electric residential customers



Comfort Partners

- Comprehensive in-home assessment
- Energy-saving home improvements by a certified contractor
- Energy education and energy action plan

Free for income-eligible Rockland Electric residential customers



Home Weatherization for Income-Qualified Customers

- In-home assessment with a certified contractor
- Energy-efficient upgrades up to \$6,000
- Health and safety improvements up to \$1,500

O&R Marketplace

Shop for energy-saving products and get customer-only rebates at our online marketplace.

nj.home.myorustore.com



Keep Saving – Explore Our Other Energy Efficiency Programs

HVAC Rebates

Get up to \$600 off when you switch to energy-efficient HVAC equipment.

oru.com/NJHVAC



Appliance Rebates

Receive a rebate or instant in-store savings on new energy-efficient appliances.

oru.com/NJAppliance



Clean Heating & Cooling Rebates

Consider heat pump technology, made more affordable through our rebates.

oru.com/NJHeatPump





ADVENTURE — BEGINS AT — YOUR LIBRARY™

Summer Family Fun Series AUGUST EVENTS

Geared for Children age 10+, Teens, and Adults
Children 10–16 must be accompanied by an adult

Tuesday, August 6 7:00 pm

Family Jazz Dance and Exercise Class

with Debi Kleinfrom Dance Theatre of New Jersey

An introductory class for brand new dancers. Learn some basic dance steps, while having fun in a relaxed environment.

No experience necessary!

Tuesday, August 13 7:00 pm

Fantasy Watercolor Landscape

with One River Art School

Attendees will learn the basics of working with watercolors and create a landscape painting. Students of all levels are welcome to join this workshop including beginners looking to learn foundational watercolor painting skills.

PLUS
July 25 - 7pm
Graphic Novel &
Visual
Storytelling

Registration required for each event.
Please keep an eye on our weekly
newsletters for more information
and how to register.

Seating limited



Administration, Clerks Office, Board of Health

201-818-4400

Alison Altano, CFO & Borough Administrator

AlisonAltano@Allendalenj.gov OR Ext. 205

Linda L. Cervino, Clerk

LindaCervino@Allendalenj.gov OR Ext. 216

Amanda Richards, Administrative Assistant

AmandaRichards@Allendalenj.gov OR Ext. 218

Dottie Blitzer, Administrative Assistant

DottieBlitzer@allendaleNJ.gov OR Ext. 200

Julia Margagliotta, Director of Communication

JuliaMargagliotta@Allendalenj.gov

Health Department

HealthDept@Allendalenj.gov OR Ext. 211

Vital Statistics Records

Marriage Licenses, Death & Birth Certificates

Northwest Bergen Regional Health Commission

201-445-7217

Building Department, Land Use, Property Maintenance

Anthony Hackett, Construction Official

CodeOfficial@Allendalenj.gov OR Ext. 208

Linda Garofalo, Land Use Administrator

LindaGarofalo@Allendalenj.gov OR Ext. 201

Mike Limatola, Property Maintenance Officer

MikeLimatola@allendalenj.gov OR Ext. 202

Department of Public Works

Andrew J. Agugliaro, Superintendent

AndrewAgugliaro@Allendalenj.gov OR Ext. 501

Kim Olivieri, Administrative Assistant

KimOlivieri@Allendalenj.gov OR Ext. 213

Tax & Finance Office

Gina Wittmaack, Tax Collector

GinaWittmaack@Allendalenj.gov OR Ext. 206

Angela Mattiace, Tax Assessor

AngelaMattiace@Allendalenj.gov OR Ext. 210

Allendale Municipal Court

Rose Novelli-Salyer, Court Administrator

novellir@ho-ho-kusboro.com OR 201-652-0699



Mayor & Council

Amy Wilczynski, Mayor

AmyWilczynski@AllendaleNJ.gov

Matt O'Toole, Council President

MatthewOTOole@AllendaleNJ.gov

Chair – Public Safety Committee

Joseph Daloisio, Councilman

JosephDaloisio@AllendaleNJ.gov

Chair – Public Works & Public Utilities Committee

Member of Land Use & Construction Code Committee

Liz Homan, Councilwoman

LizHoman@AllendaleNJ.gov

Member of Public Works & Public Utilities Committee

Member of Finance, Human Resources, Administration &

Information Tech. Committee

Susanne Lovisolo, Councilwoman

SusanneLovisolo@AllendaleNJ.gov

Chair – Land Use & Construction Code Committee

Chair – Finance, Human Resources, Administration &

Information Tech. Committee

Ed O'Connell, Councilman

EdwardOConnell@AllendaleNJ.gov

Member of Facilities, Parks and Recreation Committee

Tyler Yaccarino, Councilman

TylerYaccarino@AllendaleNJ.gov

Chair – Facilities, Parks and Recreation Committee

Member of Public Safety Committee

 [CLICK HERE](#)
 TO SIGN UP FOR
 FUTURE
 NEWSLETTERS,
 BOROUGH EMAILS
 & POLICE ALERTS

Thank you for reading!



[@AllendaleNJBorough](#)