



THE BOROUGH OF ALLENDALE

Happenings

MARCH 2024

A monthly electronic newsletter to keep residents informed. Please encourage friends and neighbors to sign up for Constant Contact by [Clicking Here](#)

A Message from Mayor Amy Wilczynski . . .

Spring is just about here! The fields are getting groomed and we are already prepping the lake for opening day. There will be a new concession stand at the lake for the 2025 season. We will have temporary bathrooms and provisions set up for this year.

We had a steel signing for the 210 West Crescent Community Center. The construction is progressing smoothly, we are hoping to start using it by the end of the year. This has been a long time coming and I'm very grateful for the team of people that made this happen!

The Allendale mural project is moving along. The Hillside kids did a super job creating indigenous birds and other creatures out of clay for the walkway on the mural. Watch the progress on Instagram @The Allendale Mural Project. Look out for more fundraisers as well. The next one is on April 8th at the AB&G.

I attended another mayor's meeting on the Fair Share Housing issue as there is a pending bill awaiting a vote that will once again impose unrealistic obligations on municipalities to build high-density housing in the 4th round compound-ing on what was required in round 3. The numbers are expected to be 15% higher. For towns like Allendale, where we are mostly developed there is what's called a 'vacant land adjustment' which requires any larger parcels of land to be zoned/developed into high-density housing in the future. They are also encouraging towns to "build up" making suburban towns look like cities.

There is no consideration for local infrastructure, environment, schools, police, water, sewer, and many other aspects of local government. Plus, we will also be affected by the obligations of neighboring towns. Saddle River is currently building a 129-unit development right off of Allendale Ave and we recently heard of another 275-unit development on Boroline Road. I have written the Governor and all the state senators and urged them to reconsider this bill. I will keep everyone informed as this rolls out. This should be a concern for everyone who lives in NJ.

Please mark your calendars for the dates of the town hall series. The first one is MARCH 27th at 7 pm in the council chambers. We will be presenting the 2024 strategy and goals for Allendale. The Council members and myself will be available to answer any questions. This is not a formal Council meeting, and we will not be up on the dais, it will be a casual and relaxed atmosphere, we hope you will come! The following town hall dates are May 14th, September 17th, and November 12th. Click [HERE](#) to request future topics to be discussed, the residents will be crafting the agendas. We have already received feedback so keep the requests coming!

Please [sign up for constant contact](#), [Swiftreach now called RAVE](#), and follow the [Mayor Amy Wilczynski](#) and [Borough Facebook](#) pages so you are always informed. Also, feel free to contact any council member or myself.

Please say Hi anytime you see me around town!

Warm regards,

Amy

Mayor Amy Wilczynski

Get In Touch. . . Stay Connected. . .
WWW.ALLENDALENJ.GOV



Amy Wilczynski
Mayor

Matt O'Toole
Council President

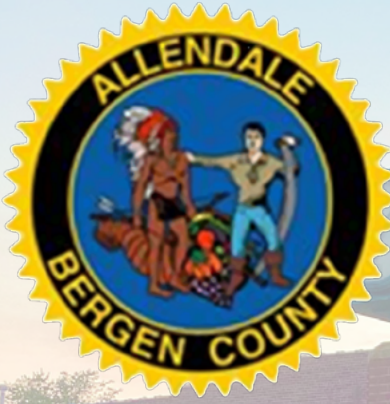
Joseph Daloisio
Councilman

Liz Homan
Councilwoman

Susanne Lovisolo
Councilwoman

Ed O'Connell
Councilman

Tyler Yaccarino
Councilman



THE BOROUGH OF ALLENDALE

Town Hall Meeting

Join the Mayor & Council in the first in a series of Town Halls in our efforts to increase transparency.

Topic: 2024 Strategy & Goals of Allendale

March 27th @ 7:00 pm

Allendale Borough Hall

Mayor & Council Chambers

500 W. Crescent Ave

Live Streamed @ [Allendalenj.gov](https://www.allendalenj.gov)



Take the Survey

Scan Here:



<https://www.allendalenj.gov/mayor-council/webforms/town-hall-survey>



ALLENDALE POLICE DEPARTMENT



Buying a gift card to pay someone?

STOP
It's a scam!

Gift cards are for gifts, not for payments.

ReportFraud.ftc.gov

government imposter IRS PRIZES online shopping arrest business imposter ransom imposter scam tech support deportation family/friend imposter IRS romance scams PRIZES SWEEPSTAKES lotteries

Buying a gift card to pay someone? Stop! It's a scam.

Gift cards are for gifts, not payments.

Is someone from the government calling to say you owe the IRS, or you will lose your SSA benefits unless you pay them with a gift card? **It's a scam.**

Is someone calling from tech support asking you to pay them with a gift card to fix your computer? **It's a scam.**

If a member of the military calls needing money to pay bail or ransom, and asks for payment with a gift card, stop. **It's a scam.**

If a member of the military calls needing money to pay bail or ransom, and asks for payment with a gift card, stop. **It's a scam.**



Report gift card scams at: **ReportFraud.ftc.gov**

For more information, visit: **Ftc.gov/giftcards**





The Allendale Police will be hosting an FBI outreach class designed for the public to teach you how to react to an active assailant in a public space.

When: March 26, 2024 - 7pm to 9pm

Where: Allendale Borough Hall - Council Chambers


Full details are below!

Your ASAPP training is scheduled for:



March 26, 2024
7pm-9pm
Allendale Borough Hall, 2nd Floor

IN PARTNERSHIP WITH THE
ALLENDALE POLICE DEPT.

Visit our website
for more information



fbi.gov/survive

Active Shooter Attack Prevention and Preparedness (ASAPP)

Active Shooter Attack Prevention and Preparedness (ASAPP) is a two-hour course created by the FBI Office of Partner Engagement's Violence Reduction Unit. The goal of ASAPP training is to empower participants with the **knowledge and skills necessary to survive** an active shooter incident in any environment (i.e., office, shopping center, house of worship, school, or government building). ASAPP combines lessons learned from years of research of active shooter incidents with interactive training techniques to create a concise, impactful, and relevant course.

During the course, attendees actively participate in a live and informative multimedia presentation. Additionally, they observe in-person demonstrations, then complete two scenarios to practice the **decision-making process and actions** necessary to survive an active shooter incident.



Participants learn why the **"Run, Hide, Fight"** protocol was chosen by federal agencies as the national standard for civilian response to an active shooter incident. They learn **"Run, Hide, Fight"** techniques and have the opportunity to practice them, reinforcing training principles.

They also learn and practice procedures to control bleeding and otherwise assist the injured until proper medical care is available. This interactive, options-based training helps participants remember **lifesaving techniques** if they are faced with such an attack.

Based on the nature of this course, the maximum class size is 40 participants. Experienced instructors are on hand to ensure the training is **conducted in a safe environment**. No real or facsimile firearms are used during the scenarios. This course is carefully designed to instruct and teach without causing fear or apprehension.



Learn more at www.fbi.gov/survive



U.S. Department of Justice
Federal Bureau of Investigation

RUN HIDE FIGHT

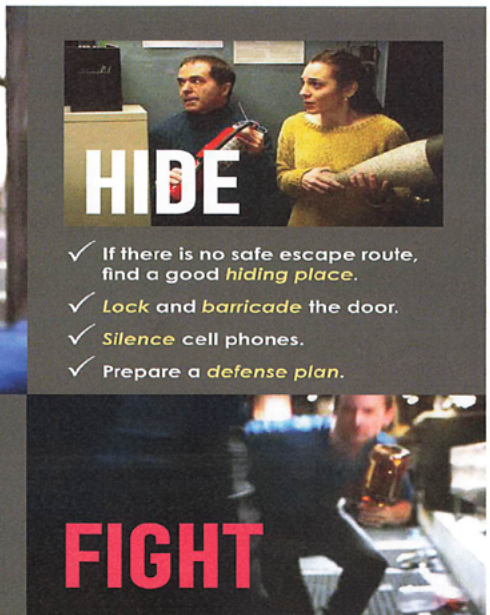
Active Shooter Attack
Prevention and
Preparedness (ASAPP)

Created by the FBI's
Office of Partner Engagement



- ✓ Wherever you go, be aware of **alternate exits**.
- ✓ Quickly and cautiously evacuate in a direction **away** from the attacker.
- ✓ **Don't hesitate**. Seconds matter.
- ✓ Remember windows and **emergency exits**.
- ✓ Leave belongings **behind**.
- ✓ Keep empty **hands raised** and clearly visible.
- ✓ Follow all **instructions** from the **police**.
- ✓ **Don't stop** until you are sure you have reached a **safe location**.



- ✓ If there is no safe escape route, find a good **hiding place**.
- ✓ **Lock** and **barricade** the door.
- ✓ **Silence** cell phones.
- ✓ Prepare a **defense plan**.



- ✓ Fight only as a **last resort**.
- ✓ Use available objects as **improvised weapons**.
- ✓ Use teamwork and surprise. A **coordinated ambush** can incapacitate an attacker.
- ✓ You are fighting for your life. **Don't fight fair!**

The Gary Letizia
Memorial Blood Drive



Every Drop Counts

DONATE BLOOD TO SAVE A LIFE

THURSDAY, MARCH 28, 2024 | 1PM -7PM

Gary Letizia was diagnosed with Leukemia at the age of 68. If not for the countless gallons of blood that kept him bravely battling Leukemia, I wouldn't have had my Dad for that final year. Please consider donating so that someone else's loved one may receive the same precious gift of time.

-Dr. Matt Letizia

Allendale Fire Department
1 Erie Plaza, Allendale
To make an appointment, visit
<http://nybc.org/letizia>
Appointments Encouraged,
Walk-Ins Welcome!



**New Jersey
Blood Services**



3rd Annual Allendale Spring Cleaning Day!

Brought To You By the Allendale Green Team

April 27, 2024 - 9am to 1pm

Borough Hall

Paper Shredding

Brought to you by the BCUA - Open to all Bergen County Residents (please bring ID).

Limit of 4 bags/boxes, weighing no more than 10 lbs. each. Paper clips and staples are acceptable. Please remove binder clips.

Electronics Recycling

ALLENDALE RESIDENTS ONLY (please bring ID)

Anything with a plug or a battery will be accepted such as Air Conditioners, Humidifiers, Space Heaters, TV's, VCR's, DVD Players, E-Book Readers, Fax Machines, Cell Phones, Telephones, Telecommunications Equipment, Cameras, Stereos, Radios, MP3 Players, Speakers, Laptops, Computers, Monitors, Printers, Keyboards, Mice, Servers, Modems, Battery Backups, Wires, Cables, Scanners & Copiers, and Small Appliances including microwaves. Empty Propane Tanks also accepted.

Prescription Drug & Syringe Take Back

Sponsored by the Allendale Police Dept. & Valley Hospital

Expired or Unused Medications, NO LIQUIDS. Syringes ACCEPTED

Clothing & Textile Recycling

Visit helpsy.com/what-we-accept for more information

Used/wearable clothing, shoes, sandals, sneakers, boots, construction boots, work gear, jackets, coats, rain gear, leathers, belts, ties, pants, shirts, sweaters, vests, blouses, dresses, skirts, robes, undergarments, sheets, Bed and Ben and throw pillows, pillowcases, towels, linens, tablecloths, hats, scarfs, gloves, handbags, purses, wallets, jewelry, watches, uniforms, jerseys, backpacks and swim wear.

EPS "Styrofoam" Recycling

Clean, white, EPS #6 "Styrofoam" packing foam. NO packing peanuts, no food contact foam.

Composting Bins & Rain Barrel Orders

Orders and Delivery by the Allendale Green Team

Food Waste Collection Information

Visit NeighborhoodCompost.com for more information

Plastic Bag/Plastic Film Collection

Examples: bubble wrap, cereal bags, produce bags, ice bags, ziploc bags, water, paper towel and toilet tissue wrapping, plastic shipping envelopes, dry cleaning bags, bread bags

X-Ray and MRI Film Collection

Unneeded X-RAY and MRI films are recycled for their silver content

All services are FREE of Charge!

For more information contact: AllendaleGreenTeam@gmail.com

AROUND TOWN...



On March 13th Mayor Amy Wilczynski and members of the Council participated in a "Beam Signing" at the construction site of our new Community Center. They joined with former Mayors and the teams of people who have made the vision of Allendale's new Community Center a reality! Thank you to everyone!

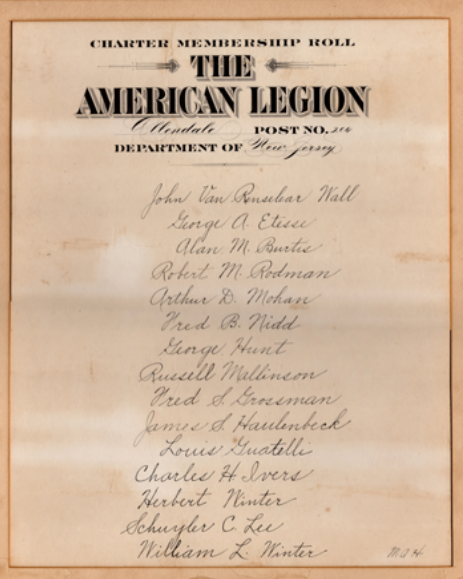


Mayor Amy Wilczynski and Councilwoman Susanne Lovisolo recently attended the grand openings and ribbon cutting ceremonies for Bergen County Pediatric Dentistry and Philly Pretzel Factory! Congratulations and welcome to Allendale!!!

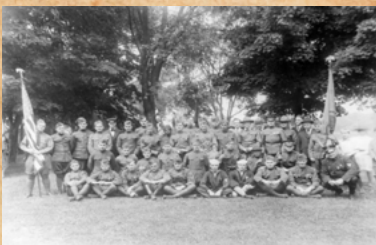
ALLENDALE HISTORY

FRED LITT
BOROUGH HISTORIAN

BERGEN GUARDS & AMERICAN LEGION POST No. 204



The undated charter membership of American Legion Post No. 204 is currently on display at the Allendale Borough Hall.



On Memorial Day, May 30, 1928, members of American Legion Post No. 204 pose near the firehouse. Pictured here are, from left to right, (seated) John Hubbard, J. Parnell Thomas, Arthur Falk, John Kelly, John Borger, Ed Hamilton, Marcy Rivers, and Russell Mallinson; (standing) Bill Winter, Arthur Mohan, Jacob Kaplan, Gene Megnin, Ingham Roswell, and George Wilson.

Beginning around 1909 and leading up to World War I, Capt. Harry Hand, a veteran of the Spanish-American War, drilled about two dozen young men in marching, handling arms, and fundamental Army tactics. Their troop called the Bergen Guards, took part in many local parades but disbanded when the United States entered the world war. Harry Hand would later serve as borough clerk and as president of the board of education.

World War I veterans organized the Allendale American Legion Post No. 204 on December 16, 1919. The first officers were Comdr. Maj. R.W. Rodman, Vice Comdr. George Buhlman, adjutant George Etesse, treasurer Russell Mallinson, and chaplain Edward Rouse. The membership committee included chairman Raymond P. Arlt, Oliver Asten, Herbert Winter, and R.V. Wall. A national charter was awarded in 1924. Two original American Legion charter and membership documents can be found at the Allendale borough hall.

After Brookside School was built in 1929, the former schoolhouse on Franklin Turnpike suffered from neglect. In the 1940s, the building was leased to American Legion Post No. 204, which later purchased the property for \$1. In 1947, the schoolhouse was renamed the War Memorial Building. The American Legion spent \$15,000 making various changes to the structure. The second floor was removed to save on heating costs. The American Legion held its meetings there and leased the space to local civic groups. In early 1950, the mayor and council approved changing their meeting place from the firehouse to the War Memorial Building, citing its larger size. By 1960, the American Legion membership had dwindled to about 22, and the members were no longer able to maintain the building. As such, the ownership reverted to the board of education, which then deeded the building back to the borough. It is believed that the remaining membership was folded into another local post.



In this c. 1915 photograph, the Bergen Guards led the parade from Recreation Field to the firehouse, passing by 209 West Allendale Avenue which stands today. The fire department followed behind.

Quick Notes...

CALLING ALL PATRIOTS!

WE ARE LOOKING FOR ACTIVE AND RETIRED MILITARY PEOPLE THAT LIVE IN ALLENDALE.

WE WILL ONCE AGAIN BE HONORING OUR ACTIVE MILITARY AT AN ARMED FORCES CEREMONY AT THE JUNE 13TH MAYOR AND COUNCIL MEETING.

PLEASE CONTACT JHART@NSCADVISOR.COM OR AMYWILCZYNSKI@ALLENDALE.NJ.GOV



Lee Memorial Library NEWS!

Museum Passes at Lee Memorial Library

Looking for something fun to do?
Come check out a museum pass!



Made possible by a generous grant from The Friends of Lee Memorial Library.
Allendale residents may borrow one pass at a time for three days. Quantities limited.

- The 9/11 Memorial & Museum
- American Museum of Natural History
- Brooklyn Botanical Garden
- The Guggenheim
- Intrepid Sea, Air & Space Museum
- Museum of Modern Art
- Storm King Art Center

Tax Collector's Update

We've got some exciting news that's going to make your life a whole lot easier – introducing **AutoPay** for your tax bills!

Here's how AutoPay works:

1. Effortless Payments: Once you enroll in AutoPay, your tax bills will be deducted from your chosen method of payment on the due date each quarter.
2. Secure and Reliable: Your payment information will be securely stored, and our payment processing is highly reliable, ensuring that our payments are made on time.
3. Flexibility: You can choose the payment method that suits you best, whether it's a bank account or credit card. Plus, you can update your payment details or unenroll from AutoPay at any time.

How to Get Started:

Log in to your WIPP Payment Portal at <https://wipp.edmundsassoc.com/Wipp/?wippid=0201>

Log into your Registered User Account. Not a registered user? No problem, just click the NEW USERS link to create an account.

Click the **SETUP AUTOPAY** link.

Enroll in AutoPay and choose your preferred payment method.

That is all there is to it! Once you have signed up, you will receive email notifications before your payment is set to be processed.



THE BOROUGH OF
ALLENDALE

The Borough of Allendale is pleased to announce that starting November 1, 2023, we will be accepting ONLINE payments for the following transactions:

- **Pet Licenses**
- **Compost Permits**
- **Garage Sales**
- **OPRA Payments**

Please contact the Clerk's Office at 201-818-4400 with any questions.



ALLENDALE FIRE DEPARTMENT

*Congratulations to the
Allendale Fire Department on being awarded a
\$45,000.00 grant to acquire a gear washer & dryer!
Great job to all involved in applying for this grant!*

**THE ALLENDALE FIRE DEPARTMENT
IS ALWAYS LOOKING FOR NEW MEMBERS!**

WE ARE IN NEED OF MEMBERS TO CONTINUE TO SERVE THE COMMUNITY!

If you are between the ages of 16 and 18, you are eligible to join as a Junior Member.

Anyone 18 years or older is eligible to join the active department.

ANYONE INTERESTED IN JOINING EMAIL: firechief@allendalenj.gov

Senior Freeze: Property Tax Relief for Seniors and Disabled Persons

The Senior Freeze property tax reimbursement program provides eligible seniors and disabled persons with reimbursements for property tax or mobile home park site fee increases. Applicants must be 65 or older as of December 31, 2022, or receiving federal Social Security disability benefits by that date. Applicants must also have owned their home by December 31, 2019 and have paid all property taxes for 2022 and 2023. The household income cap for the 2023 benefit is \$163,050.



The application deadline for the 2023 benefit is October 31, 2024.

[Learn More](#)

SPRING INTO HOMEOWNERSHIP!

FREE ONLINE ZOOM WORKSHOPS



EVERY SATURDAY IN APRIL

10:30 AM TO 12:00 PM

<p>SATURDAY APRIL 6</p> <p><i>Understanding the Homebuying Process</i> Columbia Bank</p> <hr/> <p><i>Why Pre-Approval is Important</i> Blue Foundry Bank</p>	<p>SATURDAY APRIL 13</p> <p><i>Considering Homeownership?</i> Lakeland Bank <i>We're simplifying banking.</i></p>
<p>SATURDAY APRIL 20</p> <p><i>Loss-Mitigation and Protecting Your Home from Foreclosure</i> </p>	<p>SATURDAY APRIL 27</p> <p><i>Keeping Your Credit on Track</i> kearnybank <i>For today. For tomorrow.</i></p> <hr/> <p><i>The ABCs of Homebuying</i> NVE BANK <i>You belong here.</i></p>

Register at <https://bit.ly/430Y0wq> or scan here →



A FREE PUBLIC SERVICE FROM:

Bergen County Executive, James J. Tedesco and the Board of County Commissioners
Germaine M. Ortiz, Chairwoman · Mary J. Amoroso, Vice Chairwoman · Dr. Joan M. Voss, Chair Pro Tempore
Rafael Marte · Thomas J. Sullivan · Steven A. Tanelli · Tracy Silna Zur





CENIA
NEW YORK

ALLENDALE WOMAN'S CLUB FASHION SHOW 2024 RESERVATION FORM

Please Join Us

April 24, 2024
at 6:30pm



Season's Catering

644 Pascack Road
Washington Township, NJ

Complete registration electronically
via the Google Form or use QR code



TICKET DETAILS

- Individual tickets are available for \$135 or a table of 12 may be reserved for \$1620.
- Fashion Show Seats are available on a first-come basis and are non-refundable
- Women attending must be age 21+
- Fashion Show ticket includes: Open Bar, Cocktail Hour, Dinner, DJ, Dancing, Photo Booth and Silent Auction

Contact Medy Murphy at
AllendaleWomansClubRSVP@gmail.com
for questions, and our website
allendalewomans.club/fashionshow

Payment can be made
individually or as group, see
options for payment:

- Paypal at <https://www.paypal.me/AllendaleWomansClub> - Click "Donate" enter name and phone number of the attendee and group table leader on notes section
- Venmo: @theallendalewomansclub - under charities. Enter Name and phone of the attendee and group table leader on memo section
- Checks payable to the "Allendale Woman's Club". Mail to P.O. Box 284 Allendale, NJ 07401

THE BOROUGH OF ALLENDALE BOARD OF HEALTH

Protecting, Connecting and Thriving:
We Are All Public Health
APRIL 1-7, 2024



During each day of National Public Health Week, we focus on a particular public health topic. Then, we identify ways each of us can make a difference on that topic. These areas are critical to our future success in creating the healthiest nation, and everyone can do their part to help. Click below to learn more!

NPHW 2024 DAILY THEMES

[Civic Engagement \(Monday\)](#)

[Healthy Neighborhoods \(Tuesday\)](#)

[Climate Change \(Wednesday\)](#)

[New Tools and Innovations \(Thursday\)](#)

[Reproductive and Sexual Health \(Friday\)](#)

[Emergency Preparedness \(Saturday\)](#)

[Future of Public Health \(Sunday\)](#)

FREE
COVID - 19
Rapid Tests
Available
@ Allendale
Borough Hall



Distributed By:



FREE...NO COST

Wellness Program for Adults



**You're Invited to Join Us
On Any One
of the Dates Listed!**

WHERE: Allendale
Municipal Building
500 Crescent Ave.

WHEN: 1st Friday of Every
Month.

TIME: 11:00 am to 12:00 pm

DATES FOR 2024:

Jan. 5	Apr. 5	Sept. 6
Feb. 2	May. 3	Oct. 4
Mar. 1	Jun. 7	Nov. 1
		Dec. 6

No program in July and August

For more information call:

201-818-4400

SERVICES INCLUDE:

- ◆ **Health History Evaluation**
- ◆ **Blood Pressure Measurement**
- ◆ **Height and Weight**
- ◆ **Individualized Counseling and Education**
- ◆ **Referral and Follow-up**
- ◆ **Confidential Consultation
with a Public Health Nurse**

This program is made possible by the contract your local Board of Health holds with the Bergen County Department of Health Services for programs and services like these that are designed to meet the needs of residents.

GARBAGE & RECYCLING REMINDERS

- All items should be put out *starting at 6pm the night before* the scheduled collection.
- Building materials and wood pallets *are not collected* by our garbage contractor. You must make your own arrangements to dispose of them.
- You must schedule a one-time, courtesy move-out pickup with info@AllendaleNJ.gov at *least 4 WEEKS in advance*. No metal, electronics, or recyclable materials collected.
- Remember to make sure that the lids are securely on top of your cans, especially garbage. This will help keep wildlife at bay.
- Collection containers can be no larger than 30 gallons.
- Bulk Trash must be placed on the curb and **not placed** in the road.
- Food containers being recycled need to be rinsed and cleaned before you dispose.
- Soiled pizza boxes are garbage and **NOT** recyclable.

GARBAGE	RECYCLING
<ul style="list-style-type: none">• Household kitchen, office and bathroom trash• Styrofoam	<p>Container One:</p> <ul style="list-style-type: none">• Newspapers and inserts• Junk mail, envelopes, office, notebook, construction paper• Smooth and corrugated cardboard• Glossy magazines and catalogs• Soft covered books and telephone books• Non-metallic wrapping paper and greeting cards• Shredded paper• Brown grocery bags
<p>BULKY TRASH</p> <ul style="list-style-type: none">• Furniture• Carpeting• Non-metal items• Windows/mirrors/pane glass must be taped with an "X"	<p>Container Two:</p> <ul style="list-style-type: none">• Food and beverage containers• Plastic containers with a recycling code 1, 2, 5, 7• Aluminum cans, foil• Aseptic packaging (ex: soup, milk containers)• Metal cans and empty aerosol cans• Green, clear and brown glass bottles and jars <p>** Please note that there are 2 separate trucks that pick up recyclables.</p>
<p>METAL</p> <ul style="list-style-type: none">• Anything that is least 75% metal• Artificial Holiday Trees	



RECYCLING CENTER
2024 REGULAR SEASON
APRIL 6TH TO DECEMBER 7TH
SATURDAYS - 9AM TO 2PM
WEDNESDAYS - 4PM TO 7PM



2024



COMPOST PERMIT

NOW ON SALE

PERMITS COST \$30.00. APPLICATIONS CAN BE FILLED OUT ONLINE AT
WWW.ALLENDALENJ.GOV

COMPOST SITE 2024 SEASON
APRIL 6TH TO DECEMBER 7TH

SATURDAYS - 9AM TO 2PM
WEDNESDAYS - 4PM TO 7PM



BERGEN COUNTY UTILITIES AUTHORITY

2024 Household Hazardous Waste (HHW) Collections

Bergen County Campgaw Reservation

200 Campgaw Rd., Mahwah

Saturday, May 11, 2024

Saturday, July 20, 2024

Saturday, September 7, 2024

Bergen Community College

400 Paramus Rd., Paramus

Sunday, April 7, 2024

Sunday, June 9, 2024

Sunday, October 20, 2024

HHW event collection hours are 9:00 a.m. - 3:00 p.m. (rain or shine)

2024 Document Shredding, Electronics Recycling and Tire Recycling

Bergen Community College

400 Paramus Rd., Paramus

Sunday, April 21, 2024

Saturday, August 10, 2024

Bergen County Campgaw Reservation

200 Campgaw Rd., Mahwah

Saturday, June 1, 2024

Sunday, October 6, 2024

Document shredding, electronics and tire recycling event collection hours are 9:00 a.m. - 2:00 p.m. (rain or shine)

Visit www.bcua.org for full details



THE BOROUGH OF

ALLENDALE

2024

GARBAGE & RECYCLING GUIDE

SOLID WASTE & RECYCLING CURBSIDE REGULATIONS & SCHEDULE



WG West Garbage

WB West Bulk

WR West Recycling

M Metal

EG East Garbage

EB East Bulk

ER East Recycling



January 2024

February 2024

March 2024

Sun	Mon	Tue	Wed	Thu	Fri	Sat	Sun	Mon	Tue	Wed	Thu	Fri	Sat	Sun	Mon	Tue	Wed	Thu	Fri	Sat	Sun	
	HAPPY NEW YEAR!	WG ²	EG ³	ER ⁴																		
7	WG ⁸	EG ⁹	WB ¹⁰	WR ¹¹																		
14	WG ¹⁵	EG ¹⁶		ER ¹⁸																		
21	WG ²²																					
28	WG ²⁹																					

[Click Here for the full 2024 Allendale Garbage & Recycling Guide](#)

ADMINISTRATION, CLERK'S OFFICE, BOARD OF HEALTH

Alison Altano, CFO & Borough Administrator

AlisonAltano@Allendalenj.gov OR Ext. 205

Linda L. Cervino, Clerk

LindaCervino@Allendalenj.gov OR Ext. 216

Amanda Richards, Administrative Assistant

AmandaRichards@Allendalenj.gov OR Ext. 218

John Gil, Director of Communication

JohnGil@Allendalenj.gov OR Ext. 211

Health Department

HealthDept@Allendalenj.gov OR Ext. 211

VITAL STATISTICS RECORDS

(MARRIAGE LICENSES, DEATH AND BIRTH CERTIFICATES)

Northwest Bergen Regional Health Commission 201-445-7217

BUILDING DEPARTMENT, LAND USE, PROPERTY MAINTENANCE

Anthony Hackett, Construction Official

CodeOfficial@Allendalenj.gov OR Ext. 208

Linda Garofalo, Land Use Administrator

LindaGarofalo@Allendalenj.gov OR Ext. 201

Mike Limatola, Property Maintenance Officer

MikeLimatola@allendalenj.gov OR Ext. 202

DEPARTMENT OF PUBLIC WORKS

Andrew J. Agugliaro, Superintendent

AndrewAgugliaro@Allendalenj.gov OR Ext. 501

Kim Olivieri, Administrative Assistant

KimOlivieri@Allendalenj.gov OR Ext. 213

TAX & FINANCE OFFICE

Gina Wittmaack, Tax Collector

GinaWittmaack@Allendalenj.gov OR Ext. 206

Angela Mattiace, Tax Assessor

AngelaMattiace@Allendalenj.gov OR Ext. 210

ALLENDALE MUNICIPAL COURT

Rose Novelli-Salyer, Court Administrator

novellir@ho-ho-kusboro.com OR 201-652-0699

MAYOR & COUNCIL

Amy Wilczynski, Mayor

AmyWilczynski@AllendaleNJ.gov

Matt O'Toole, Council President

MatthewOTOole@AllendaleNJ.gov

Chair – Public Safety Committee

Joseph Daloisio, Councilman

JosephDaloisio@AllendaleNJ.gov

Chair – Public Works & Public Utilities Committee

Member of Land Use & Construction Code Committee

Liz Homan, Councilwoman

LizHoman@AllendaleNJ.gov

Member of Public Works & Public Utilities Committee

Member of Finance, Human Resources, Administration & Information Tech. Committee

Susanne Lovisolo, Councilwoman

SusanneLovisolo@AllendaleNJ.gov

Chair – Land Use & Construction Code Committee

Chair – Finance, Human Resources, Administration & Information Tech. Committee

Ed O'Connell, Councilman

EdwardOConnell@AllendaleNJ.gov

Member of Facilities, Parks and Recreation Committee

Tyler Yaccarino, Councilman

TylerYaccarino@AllendaleNJ.gov

Chair – Facilities, Parks and Recreation Committee

Member of Public Safety Committee

Get In Touch. . . Stay Connected. . .
WWW.ALLENDALENJ.GOV



@ALLENDALENJBOROUGH