



THE BOROUGH OF ALLENDALE

Happenings June 2024



A monthly electronic newsletter to keep residents informed. Please encourage friends and neighbors to sign up for Constant Contact by [Clicking Here](#)

A Message from Mayor Amy Wilczynski . . .

In a few days, it will officially be SUMMER! Crestwood Lake will be open full-time on 6/22 when the entire management staff is available. We will have a brand-new concession stand in 2025. The kitchen area required too many repairs, so we had to close it down this year and will be substituting with food trucks. We have kept resident rates at a very reasonable price; everyone should consider joining!

I want to thank everyone for your patience throughout the construction. I understand how frustrating and time-consuming detours can be! This was a combination of lead line replacement from Veolia, ADA ramp replacement and county road paving all at once. Coordination has been challenging, and as these projects often go, there are many last-minute alterations. We have been getting the messages out as soon as we receive them from the county. The messaging has often come in very late which has caused many delays. We worked diligently with the county to get as much communication as possible. Chief Dillon and I plan on having a post-mortem meeting with the county to help improve the process and promote iterative best practices.

Our downtown has been busy, which we like. However, we ask everyone to be mindful when driving in this district. There are a significant number of cars on the road, and we have seen an increase in speeding and illegal parking. There is absolutely no parking or stopping in crosswalks. Please use the commuter parking lot when shopping or dining downtown. We will be providing better signage and striping to direct residents to this lot in the very near future.

The Dine the 'Dale event was a success; everyone enjoyed al fresco dining on 'Main St.' It was a beautiful evening, and many requested that we have these more frequently, so we will certainly try! This event was for fundraising for the Allendale Mural Project. There is still an opportunity to donate. If you would like to be a gold or platinum donor, your name will be on a plaque in front of the mural. See the Borough website for more details.

I have been attending Mayor's meetings all over NJ to discuss the new Fair Share Housing ruling. If projected numbers are correct, Allendale will be required to build 200 affordable units in the 4th round. To make this work financially for developers, 15-20% of the units will be affordable and the remaining market rates. This brings our number up to a whopping 1000 units! We are being proactive and have created a team of experts to come up with a strategic plan. All municipalities in NJ are dealing with this. There is a federal lawsuit pending with several municipalities that Allendale may consider joining once we have more facts. In addition to this, Saddle River has a proposed 400 units on the Allendale border in 2 different developments and is requesting to use our sewer line. We have been actively researching this to make sure our infrastructure is protected.

We are meeting internally to discuss the usage of the new community center. We can't wait for all our volunteer groups to begin using the new space. We anticipate a ribbon cutting before the year's end.

Please consider joining our volunteer ambulance corps (AVAC) or fire department (AFD). We are in need of drivers and people to cover the daytime shifts. It could be a very rewarding and fulfilling experience. Training is provided.

I hope everyone has a safe and healthy start to the summer. Please reach out to me or any council members if you have any questions. We hope to see you at one of our free concerts at the lake!

Please sign up for [Constant Contact](#), [Swiftreach now called RAVE](#) and follow the [Mayor Amy Wilczynski](#) and [Borough FB](#) pages so you are always informed. Also feel free to contact any council member or myself. Please say hi anytime you see me around town!

Warm regards,

Amy

Mayor Amy Wilczynski

Get In Touch. . . Stay Connected. . .
WWW.ALLENDALENJ.GOV



Amy Wilczynski
Mayor

Matt O'Toole
Council President

Joseph Daloisio
Councilman

Liz Homan
Councilwoman

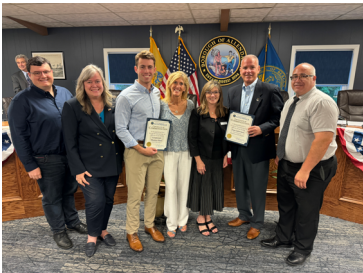
Susanne Lovisolo
Councilwoman

Ed O'Connell
Councilman

Tyler Yaccarino
Councilman

AROUND TOWN. . .

During the June 13th Mayor & Council Meeting, Allendale honored residents serving in our armed forces. Thank you to everyone who serves and defends our freedoms! [CLICK HERE](#) for a video with highlights from the event.



Quick Notes...



FEMA's Community Emergency Response Team (CERT) program educates citizens about disaster preparedness for hazards that may impact their area and provides training in basic disaster response skills, such as:

- Fire safety
- Light search and rescue
- Team organization
- Shelter fundamentals and management
- Disaster medical operations
- Disaster psychology

If you are interested in learning valuable skills to help family, friends, and neighbors during a disaster or emergency, consider joining Allendale's Community Emergency Response Team. You can contribute and make a difference even if you don't have a significant amount of time to volunteer. The next CERT Basic Training course is scheduled to run from September 26th through November 9th in Paramus. For questions about CERT, email allendalecertcoordinator@gmail.com.

4th of July Garbage & Recycling Schedule

7/1 - Monday:
West Side Garbage

7/2 - Tuesday:
East Side Garbage

7/3 - Wednesday:
East Side Bulk

7/4 - Thursday:
Happy 4th! No Pickup

7/5 - Friday:
West Side Garbage
East Side Recycling

7/6 - Saturday:
East Side Garbage

Allendale Community Center UPDATE

The Allendale Community Center is located at 210 West Crescent Ave. It will be available for all Allendale volunteer groups to use for meeting and recreation space.

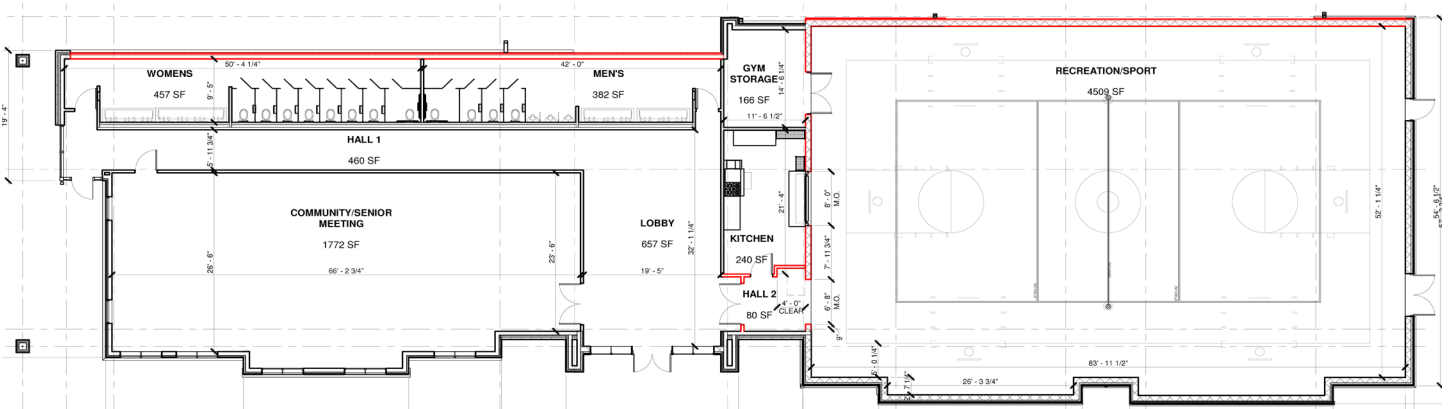


As you look at the building from the front, the left side is a large room with a divider to make it into two meeting rooms. There will be TVs set up for presentations and a kitchenette area.

To the right of the building is a gym area, which will be lined for basketball and pickleball. A commercial kitchen will also overlook the gym.

Borough Hall offices will remain at the current 500 West Crescent building. Lee Memorial Library will remain in the same space as well.

We anticipate to be in the building by the end of the year.



CLICK HERE TO SIGN UP FOR BOROUGH EMAILS & POLICE/OEM ALERTS

ALLENDALE FIRE DEPARTMENT



VOLUNTEER FIREFIGHTERS NEEDED

- Training is Provided
- Weekly Trainings/Clean ups
- On Call 24/7

***Firefighters 18+
Junior Members 16+***



If you're interested in becoming a firefighter, visit the firehouse at 7:30 p.m. on any Thursday to discuss your involvement and receive an application.
1 Erie Plaza Allendale, NJ 07401



ALLENDALE AMBULANCE CORPS

SERVING SINCE 1937

Team building is essential in an organization such as The Allendale Volunteer Ambulance Corps (AVAC). When we are on an emergency call, we must trust our team members. What better way to build team cohesiveness than to work on drills together but also to gather together and have a bit of fun!

Do you want to make a difference in someone's life? Consider joining the Allendale Volunteer Ambulance Corps! FALL Classes are available NOW for Ages 16 and up; training is free, the work is rewarding...and the friendships you make are PRICELESS! There's always room for more! Call Daryl, AVAC EMS Chief, at 201-587-4008 for more info and to start your exciting AVAC journey today!

Like our **OFFICIAL** Facebook page! [Allendale Volunteer Ambulance Corps.](#)

(NOTE: There are others who pretend to be affiliated with us and use a variation of our name.)



ALLENDALE HISTORY

FRED LITT
BOROUGH HISTORIAN

1961 AERIAL MAP OF ALLENDALE

During my recent efforts to identify and preserve Allendale's historic treasures, I discovered this aerial photo of Allendale, dated April 24, 1961. The map was scanned at 600 dpi and preserved digitally. You can view the original at Borough Hall, 500 West Crescent Avenue, today. The very fine details of 1961 it provides are amazing!

The reason this photo was taken is unknown. Look closely. In 1961, there is no borough hall or library at 500 West Crescent Avenue. No U.S. Post Office building, no Hillside Elementary School, no Northern Highlands Regional High School. Crestwood Lake and the Celery Farm were privately owned. There is a municipal pool behind Brookside School, and Lake San Jacinto is going strong. The original firehouse from 1913 still housed our fire department with the ambulance building alongside it. Guardian Angel Church had not yet been built, and Archer Church used the chapel built in the late 1800s. The Fell House was a private residence, and Lee Memorial Library and the Municipal Building were located on Franklin Turnpike. The A&P Future Store, now Acme, was a private residence with an apple orchard. The 1960s were the beginning of an exciting time of growth and change in Allendale.



Aerial photo of Allendale, New Jersey, dated April 23, 1961. This photo currently hangs at Borough Hall.

ALLENDALE CARS & COFFEE

SUNDAY, JUNE 23RD

10 AM - 1 PM

Allendale E. Transit Lot - Enter off W. Allendale Ave Near Clock Tower / Post Office

\$10 Cash Donation Per Car – Free for Spectators - Space for first 120 Cars

Donations Used for Allendale Mural Project, Community Initiatives, and Outreach

Light Breakfast & Door Prizes After 12 PM incl. with \$10 Donation. BBQ Food Vendor!

Please Be Respectful, Allendale Police Will Be Present

Questions or to Pre-Register: Events@VaderC5.com or Instagram @Vader_C5

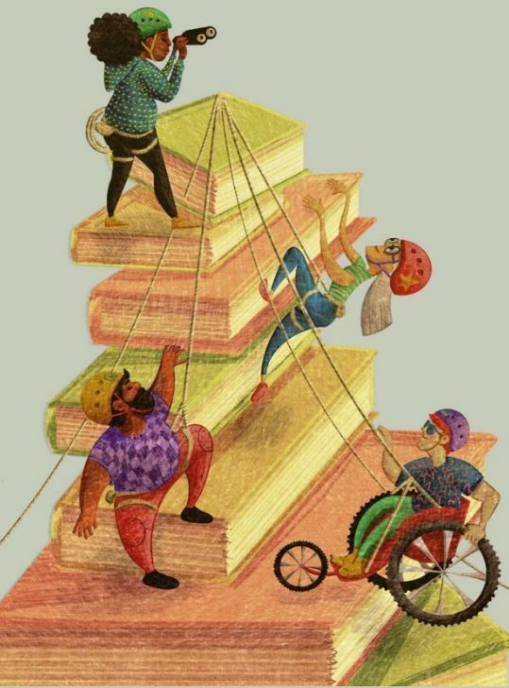


Event Chair: Tyler Yaccarino | Co-Chair: Pete Cammisa & Todd A. Griffith

ALLENDALE CARS & COFFEE SPONSORED BY:

A collage of logos for event sponsors. The logos include: Auto Polishing Center, All American Paramus (with Ford logo), Auto Biography (www.nycautobiography.com), Dirty's Detailing (EST. 2022), Car Care Specialties, Dunkin', Downes Tree Service (Since 1986), Adam's Polishes, Garden State Cars and Coffee, and Goldberg's (Since 1949). Additionally, there is a 'QUALITY' logo with a star and a Chevrolet/GMC logo.

BRAKES & BRISKETS



ADVENTURE — BEGINS AT — YOUR LIBRARY™

Summer Family Fun Series JULY EVENTS

Geared for Children age 10+, Teens, and Adults
Children 10–16 must be accompanied by an adult

Tuesday, July 9 7:00 pm

Isekai Inkblot Journey with One River Art School

Students will create an inkblot illustration featuring an original character (or an existing one from a book) in a fictional universe. They will create watercolor inkblots, and then improvise environmental details in a micron pen.

Thursday, July 25 7:00 pm

**Graphic Novel & Visual Storytelling
with One River Art School**

Students will learn about graphic novels and the art of visual storytelling. By the end of the workshop, they will have a colored graphic novel page that tells a story of an adventure.

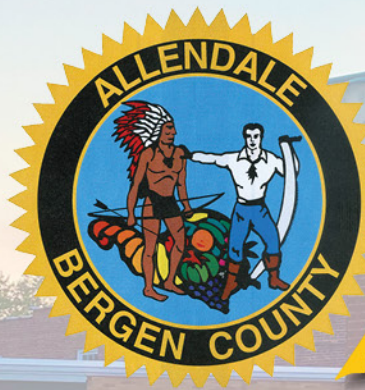
Thursday, July 11 7:00 pm

**Hip Hop Dance Class with Debi Klein
from Dance Theatre of New Jersey**

An introductory class for brand new dancers. Learn some basic hip hop steps, while having fun in a relaxed environment. No experience necessary!

Registration required for each event.
Please keep an eye on our weekly newsletters for
more information and how to register.

Seating limited



THE BOROUGH OF ALLENDALE

Happenings

2024 BUDGET EDITION

A MESSAGE FROM THE BOROUGH OF ALLENDALE MAYOR AND COUNCIL

Dear Allendale Taxpayer,

One of the most important responsibilities in the Borough is the budget. We pride ourselves on making fiscal responsibility a top priority. The finance team consists of Councilwoman Lovisolo, Councilwoman Homan, Alison Altano our CFO and Business Administrator and myself. We have all spent a great deal of time working and re-working the budget over the past four months. Each year it is more and more difficult to keep the budget flat with the tremendous rise in everything from healthcare to gas and ongoing economic uncertainty. We know you all understand this because we are all feeling it at home with increases in our everyday needs and household budgets. This is why we take this job very seriously and make sure we are spending tax dollars in a way to get the greatest value.

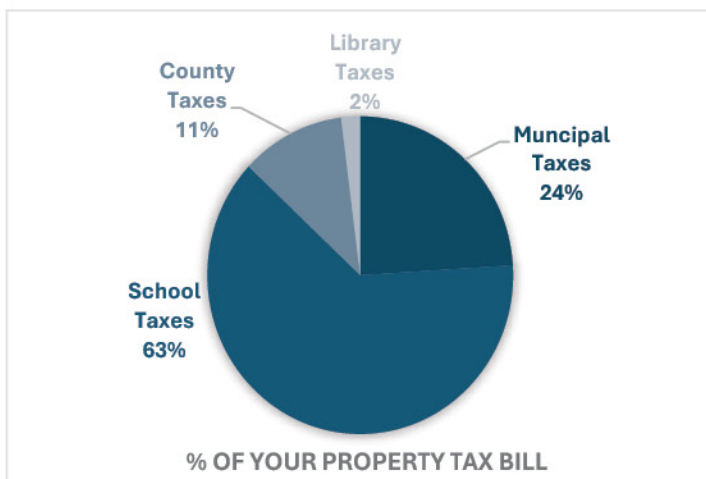
We use zero based budgeting at each cycle. This means all expenses must be justified for the new budget year. We essentially start from zero which allows us to take a fresh look each year and rethink all our resource needs.

While we cannot control the County, Library, and school taxes, we are pleased to inform you that we can provide the same or better municipal services with no tax increase in the municipal portion of your bill. In fact, many will have a decrease. This is in part because of the annual rolling reassessment program which is the most efficient way to keep values current and fair for everyone.

Thank you, please let us know if you have any questions and know we will always work hard for your tax dollars to make Allendale the best place it can be.

Mayor Amy Wilczynski

WHERE DO YOUR TAX DOLLARS GO?



Your property tax bill consists of four components:

1. Allendale Schools
2. Bergen County Government
3. Lee Memorial Public Library
4. Allendale Municipal Services

New Jersey's fiscal laws require the municipal government of Allendale to serve as a billing and collection agency for all four separate entities. It is important to note that municipal taxes are only a portion of an Allendale property taxpayer's obligation.



Amy Wilczynski
Mayor

Matt O'Toole
Council President

Joseph Daloisio
Councilman

Liz Homan
Councilwoman

Susanne Lovisolo
Councilwoman

Ed O'Connell
Councilman

Tyler Yaccarino
Councilman

PROPOSED MUNICIPAL TAX RATE COMPARISON

	2024 Proposed Tax Rate	2023 Actual Tax Rate	Tax Rate Decrease
MUNICIPAL SERVICES	0. 511	0.539	(0.028)

MUNICIPAL REVENUE COMPARISON

	2024	2023
Alcoholic Beverages	12,500	15,250
Fees and Permits	50,000	70,000
Municipal Court Fines and Costs	16,800	20,001
Interest and Costs on Taxes	60,000	56,000
Interest on Investments and Deposits	220,000	85,000
Dues and Fees – Crestwood Lake	340,000	325,000
Sewer Fees	355,400	299,000
Garbage Collection Fees	1,800	2,400
Cell Tower Lease	147,000	65,000
Cable TV Franchise Fees	98,000	100,000
Energy Receipts Tax	1,081,614	1,076,257
Municipal Relief Fund Aid	111,490	55,756
Uniform Construction Code Fees	250,000	300,000
Grants with Offsetting Appropriations	653,613	77,806
Uniform Fire Safety Act LEA Rebates	36,000	35,000
PILOT Payment	140,000	133,000
Water Fund Reserve for Debt Service	-0-	105,416
Receipts from Delinquent Taxes	175,000	175,000
Amount to be raised by Taxes for Municipal Budget	11,073,352	10,977,355
Amount to be raised by Taxes for Free Public Library	736,932	691,949
Surplus	1,100,000	1,100,000
TOTAL GENERAL REVENUES	16,659,501	15,765,190

MUNICIPAL APPROPRIATION COMPARISON

	2024	2023
General Government	1,367,100	1,191,420
Construction and Land Use Administration	388,350	332,550
Insurance	1,962,341	1,725,000
Public Safety	3,070,750	3,455,525
Public Works	1,428,000	1,293,000
Garbage, Recycling and Trash Removal	922,000	907,000
Health Services	58,000	56,000
Parks and Crestwood Lake	419,000	380,300
Utilities	489,000	489,000
Salary and Wage Adjustment	90,000	97,000
Contingency	30,000	30,000
Northwest Bergen Sewer Authority	2,049,882	1,952,895
Statutory Charges	1,389,505	1,375,329
Lee Memorial Public Library	736,932	691,949
Grants Offset by Revenues	52,775	77,806
Capital Improvement Fund	1,000,000	953,000
Debt Service and Deferred Charges	605,866	157,416
Reserve for Uncollected Taxes	600,000	600,000
TOTAL GENERAL APPROPRIATIONS	16,659,501	15,765,190

TAX COLLECTION

The Tax Collector is responsible for billing, collection, reporting, and enforcing municipal taxes for the Borough of Allendale. Tax bills are mailed out in July, and the first payment is due August 1st. Property taxes are due February 1, May 1, August 1 and November 1.

Failure to receive a tax bill does not exempt you from paying your taxes or the interest due on delinquent taxes, but the Borough does permit a ten (10) day grace period. Taxes must be received in the office before the 10th; however, if the 10th falls on a weekend or legal holiday you have until the next business day to make payment. The State of New Jersey does not permit postmark dating. All payments may be made by check, money order, or online. The interest rate charged for late payment of taxes is 8% on the first \$1,500.00, plus 18% on the amount over \$1,500.00. Bills may be paid in full by adding the amounts on the four numbered stubs. This covers the last half of the current year and the first half of the following year.

As a statutory officer of the State of New Jersey, the Tax Collector is obligated to follow all the State Statutes regarding property tax collection including rate, interest of delinquent tax payments, and tax sale procedures.

TAX ASSESSMENT

Like most municipalities, the Borough of Allendale is contracted with an appraisal company to participate in an annual rolling reassessment program. This is the most efficient way to keep property values current and fair for all residents. Due to the rising real estate market, municipalities were advised by Bergen County to perform town-wide property assessments to ensure all homes are assessed according to the current market. The increase in average assessed properties within Allendale has allowed the Borough to have a zero tax rate increase.

Tax Collector's Update

We've got some exciting news that's going to make your life a whole lot easier – introducing **AutoPay** for your tax bills!

Here's how AutoPay works:

1. Effortless Payments: Once you enroll in AutoPay, your tax bills will be deducted from your chosen method of payment on the due date each quarter.
2. Secure and Reliable: Your payment information will be securely stored, and our payment processing is highly reliable, ensuring that our payments are made on time.
3. Flexibility: You can choose the payment method that suits you best, whether it's a bank account or credit card. Plus, you can update your payment details or unenroll from AutoPay at any time.

How to Get Started:

Log in to your WIPP Payment Portal at <https://wipp.edmundsassoc.com/Wipp/?wippid=0201>

Log into your Registered User Account. Not a registered user? No problem, just click the NEW USERS link to create an account.

Click the **SETUP AUTOPAY** link.

Enroll in AutoPay and choose your preferred payment method.

That is all there is to it! Once you have signed up, you will receive email notifications before your payment is set to be processed.

Hey Allendale residents,
you may be eligible for a

FREE Home Energy Assessment

Identify areas in your home where you can save energy & money and make informed decisions about energy efficiency upgrades.



See which assessment is right for you!

Get started today at oru.com/comfort



Quick Home Energy Check-up

- Assessment with certified energy advisor
- Complimentary energy-saving installations
- Energy-efficient recommendations

Free for all Rockland Electric residential customers



Comfort Partners

- Comprehensive in-home assessment
- Energy-saving home improvements by a certified contractor
- Energy education and energy action plan

Free for income-eligible Rockland Electric residential customers



Home Weatherization for Income-Qualified Customers

- In-home assessment with a certified contractor
- Energy-efficient upgrades up to \$6,000
- Health and safety improvements up to \$1,500

O&R Marketplace

Shop for energy-saving products and get customer-only rebates at our online marketplace.

nj.home.myorustore.com



Keep Saving – Explore Our Other Energy Efficiency Programs

HVAC Rebates

Get up to \$600 off when you switch to energy-efficient HVAC equipment.

oru.com/NJHVAC



Appliance Rebates

Receive a rebate or instant in-store savings on new energy-efficient appliances.

oru.com/NJAppliance



Clean Heating & Cooling Rebates

Consider heat pump technology, made more affordable through our rebates.

oru.com/NJHeatPump



FREE...NO COST

Wellness Program for Adults



**You're Invited to Join Us
On Any One
of the Dates Listed!**

WHERE: Allendale
Municipal Building
500 Crescent Ave.

WHEN: 1st Friday of Every
Month.

TIME: 11:00 am to 12:00 pm

DATES FOR 2024:

Jan. 5	Apr. 5	Sept. 6
Feb. 2	May. 3	Oct. 4
Mar. 1	Jun. 7	Nov. 1
		Dec. 6

No program in July and August

For more information call:

201-818-4400

SERVICES INCLUDE:

- ◆ **Health History Evaluation**
- ◆ **Blood Pressure Measurement**
- ◆ **Height and Weight**
- ◆ **Individualized Counseling and Education**
- ◆ **Referral and Follow-up**
- ◆ **Confidential Consultation
with a Public Health Nurse**

This program is made possible by the contract your local Board of Health holds with the Bergen County Department of Health Services for programs and services like these that are designed to meet the needs of residents.

GARBAGE & RECYCLING REMINDERS

- All items should be put out **starting at 6pm the night before** the scheduled collection.
- Building materials and wood pallets **are not collected** by our garbage contractor. You must make your own arrangements to dispose of them.
- You must schedule a one-time, courtesy move-out pickup with info@AllendaleNJ.gov at **least 4 WEEKS in advance**. No metal, electronics, or recyclable materials collected.
- Remember to make sure that the lids are securely on top of your cans, especially garbage. This will help keep wildlife at bay.
- Collection containers can be no larger than 30 gallons.
- Bulk Trash must be placed on the curb and **not placed** in the road.
- Food containers being recycled need to be rinsed and cleaned before you dispose.
- Soiled pizza boxes are garbage and **NOT** recyclable.

GARBAGE	RECYCLING
<ul style="list-style-type: none">• Household kitchen, office and bathroom trash• Styrofoam	<p>Container One:</p> <ul style="list-style-type: none">• Newspapers and inserts• Junk mail, envelopes, office, notebook, construction paper• Smooth and corrugated cardboard• Glossy magazines and catalogs• Soft covered books and telephone books• Non-metallic wrapping paper and greeting cards• Shredded paper• Brown grocery bags
<p>BULKY TRASH</p> <ul style="list-style-type: none">• Furniture• Carpeting• Non-metal items• Windows/mirrors/pane glass must be taped with an "X"	<p>Container Two:</p> <ul style="list-style-type: none">• Food and beverage containers• Plastic containers with a recycling code 1, 2, 5, 7• Aluminum cans, foil• Aseptic packaging (ex: soup, milk containers)• Metal cans and empty aerosol cans• Green, clear and brown glass bottles and jars <p>** Please note that there are 2 separate trucks that pick up recyclables.</p>
<p>METAL</p> <ul style="list-style-type: none">• Anything that is least 75% metal• Artificial Holiday Trees	



RECYCLING CENTER
2024 REGULAR SEASON
APRIL 6TH TO DECEMBER 7TH
SATURDAYS - 9AM TO 2PM
WEDNESDAYS - 4PM TO 7PM



BERGEN COUNTY UTILITIES AUTHORITY

2024 Household Hazardous Waste (HHW) Collections

Bergen County Campgaw Reservation

200 Campgaw Rd., Mahwah

Saturday, May 11, 2024

Saturday, July 20, 2024

Saturday, September 7, 2024

Bergen Community College

400 Paramus Rd., Paramus

Sunday, April 7, 2024

Sunday, June 9, 2024

Sunday, October 20, 2024

HHW event collection hours are 9:00 a.m. - 3:00 p.m. (rain or shine)

2024 Document Shredding, Electronics Recycling and Tire Recycling

Bergen Community College

400 Paramus Rd., Paramus

Sunday, April 21, 2024

Saturday, August 10, 2024

Bergen County Campgaw Reservation

200 Campgaw Rd., Mahwah

Saturday, June 1, 2024

Sunday, October 6, 2024

Document shredding, electronics and tire recycling event collection hours are 9:00 a.m. - 2:00 p.m. (rain or shine)

Visit www.bcua.org for full details



THE BOROUGH OF

ALLENDALE

2024

GARBAGE & RECYCLING GUIDE

SOLID WASTE & RECYCLING CURBSIDE REGULATIONS & SCHEDULE



WG West Garbage

WB West Bulk

WR West Recycling

M Metal



EG East Garbage

EB East Bulk

ER East Recycling

January 2024

February 2024

March 2024

Sun	Mon	Tue	Wed	Thu	Fri	Sat	Sun	Mon	Tue	Wed	Thu	Fri	Sat	Sun	Mon	Tue	Wed	Thu	Fri	Sat	Sun	Mon	Tue	Wed	Thu	Fri	Sat	Sun
	HAPPY NEW YEAR!	WG	EG	EB	ER																							
7	WG	EG	WB	WR			WG	EG	WB	WR				WG	EG	WB	WR											
14	WG	EG		ER			WG	EG	WB	WR				WG	EG	WB	WR											
21	WG						WG	EG	WB	WR				WG	EG	WB	WR											
28	WG						WG	EG	WB	WR				WG	EG	WB	WR											

[Click Here for the full](#)

[2024 Allendale](#)

[Garbage & Recycling Guide](#)

ADMINISTRATION, CLERK'S OFFICE, BOARD OF HEALTH

Alison Altano, CFO & Borough Administrator

AlisonAltano@Allendalenj.gov OR Ext. 205

Linda L. Cervino, Clerk

LindaCervino@Allendalenj.gov OR Ext. 216

Amanda Richards, Administrative Assistant

AmandaRichards@Allendalenj.gov OR Ext. 218

John Gil, Director of Communication

JohnGil@Allendalenj.gov OR Ext. 211

Health Department

HealthDept@Allendalenj.gov OR Ext. 211

VITAL STATISTICS RECORDS

(MARRIAGE LICENSES, DEATH AND BIRTH CERTIFICATES)

Northwest Bergen Regional Health Commission 201-445-7217

BUILDING DEPARTMENT, LAND USE, PROPERTY MAINTENANCE

Anthony Hackett, Construction Official

CodeOfficial@Allendalenj.gov OR Ext. 208

Linda Garofalo, Land Use Administrator

LindaGarofalo@Allendalenj.gov OR Ext. 201

Mike Limatola, Property Maintenance Officer

MikeLimatola@allendalenj.gov OR Ext. 202

DEPARTMENT OF PUBLIC WORKS

Andrew J. Agugliaro, Superintendent

AndrewAgugliaro@Allendalenj.gov OR Ext. 501

Kim Olivieri, Administrative Assistant

KimOlivieri@Allendalenj.gov OR Ext. 213

TAX & FINANCE OFFICE

Gina Wittmaack, Tax Collector

GinaWittmaack@Allendalenj.gov OR Ext. 206

Angela Mattiace, Tax Assessor

AngelaMattiace@Allendalenj.gov OR Ext. 210

ALLENDALE MUNICIPAL COURT

Rose Novelli-Salyer, Court Administrator

novellir@ho-ho-kusboro.com OR 201-652-0699

MAYOR & COUNCIL

Amy Wilczynski, Mayor

AmyWilczynski@AllendaleNJ.gov

Matt O'Toole, Council President

MatthewOTOole@AllendaleNJ.gov

Chair – Public Safety Committee

Joseph Daloisio, Councilman

JosephDaloisio@AllendaleNJ.gov

Chair – Public Works & Public Utilities Committee

Member of Land Use & Construction Code Committee

Liz Homan, Councilwoman

LizHoman@AllendaleNJ.gov

Member of Public Works & Public Utilities Committee

Member of Finance, Human Resources, Administration & Information Tech. Committee

Susanne Lovisolo, Councilwoman

SusanneLovisolo@AllendaleNJ.gov

Chair – Land Use & Construction Code Committee

Chair – Finance, Human Resources, Administration & Information Tech. Committee

Ed O'Connell, Councilman

EdwardOConnell@AllendaleNJ.gov

Member of Facilities, Parks and Recreation Committee

Tyler Yaccarino, Councilman

TylerYaccarino@AllendaleNJ.gov

Chair – Facilities, Parks and Recreation Committee

Member of Public Safety Committee

Get In Touch. . . Stay Connected. . .
WWW.ALLENDALENJ.GOV



@ALLENDALENJBOROUGH